

Standalone TouchLinX Demo

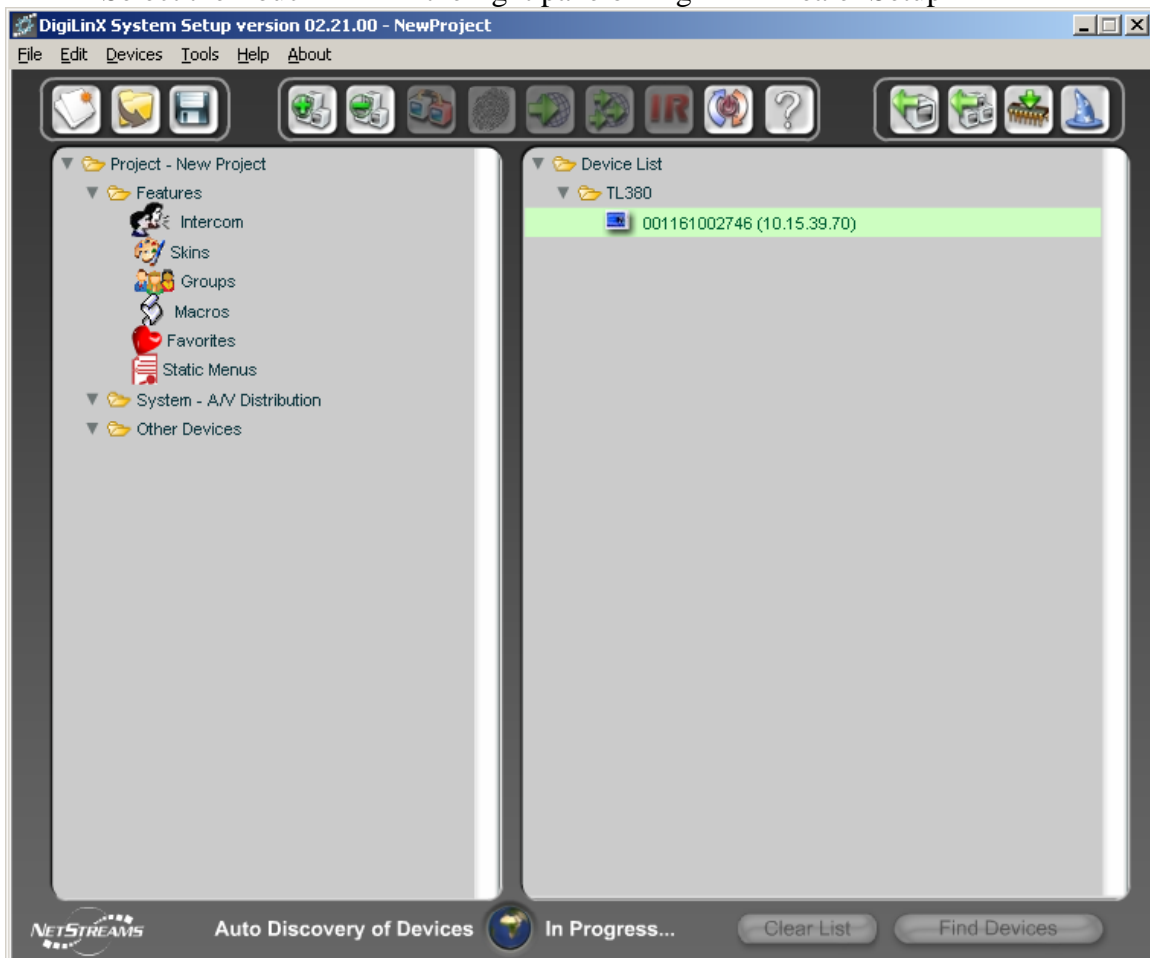
These instructions will allow you to use the supplied files to modify a TouchLinX to function as a Standalone Demo. There are also instructions on how to return a TouchLinX back to its normal state.

What you need:

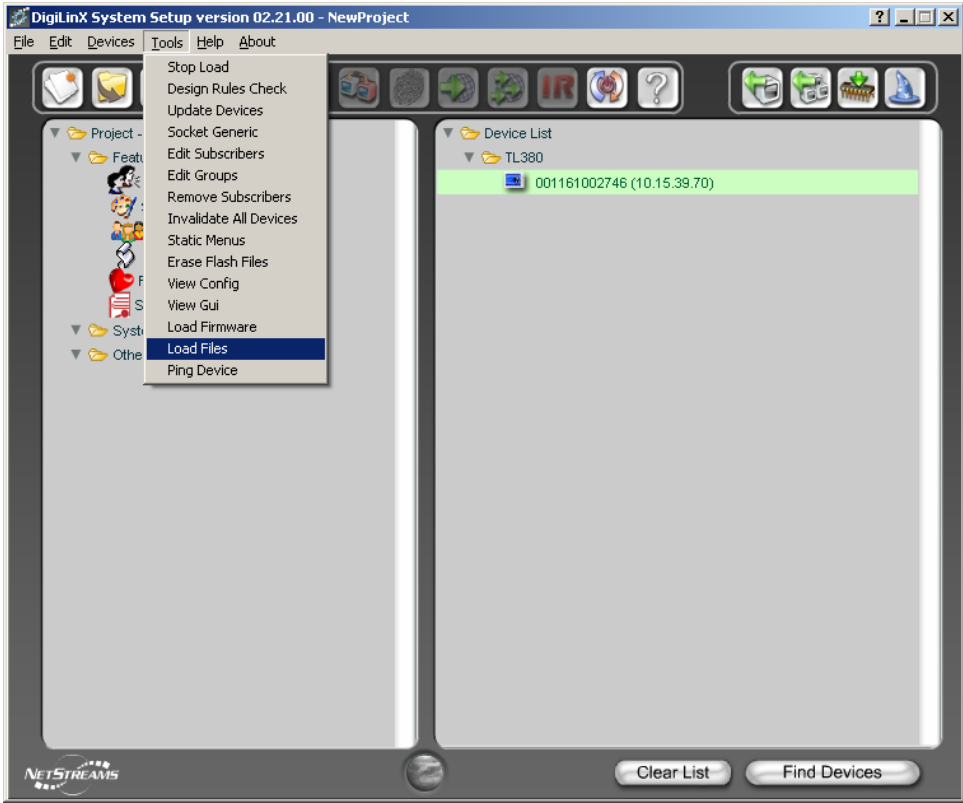
- The TouchLinX_demo.zip file (located in the DigiLinX Tools section of Dealer Documents)
- TouchLinX (TL380, TL430, TL700)
- Local power supply (PL228, PL250)

Configure a TouchLinX for the Standalone Demo

- Unzip the TouchLinX_demo.zip software into a folder on the computer you run DigiLinX Dealer Setup
- Using a Cat5 cable, connect the TouchLinX to your computer's network card.
- Start DigiLinX Dealer Setup
- Select the TouchLinX in the right pane of DigiLinX Dealer Setup



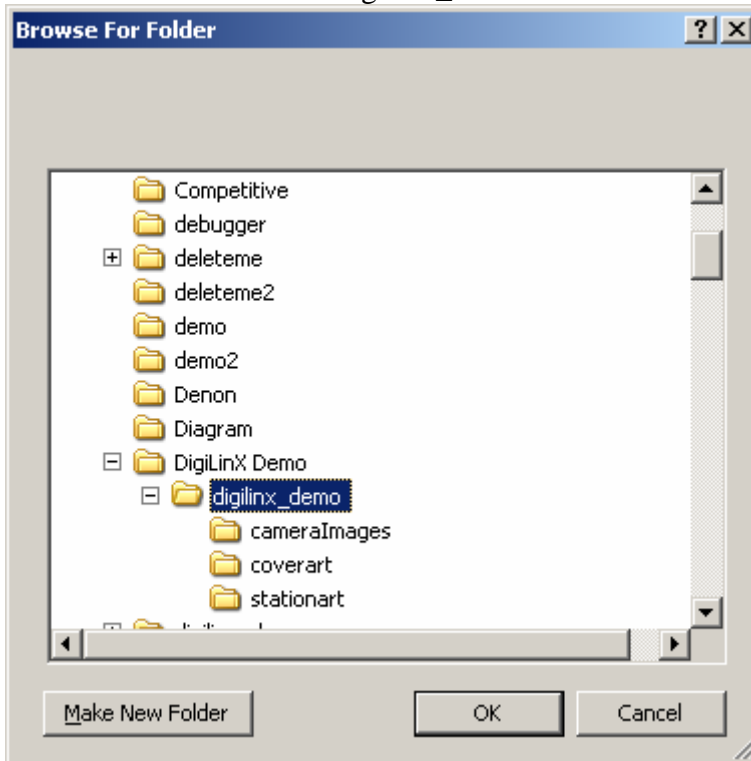
- From the Tools menu select "Load Files"



- Click on the Select Directory button



- Locate the folder were you unzipped the TouchLinX Demo and drill down till you find a folder call “digilinx_demo”



- Select it
- Click OK
- You should now be on this screen



- Choose **SELECT ALL**
- Click the **DOWNLOAD FILES** button



- This will download all the files directly to the selected TouchLinX



The TouchLinX will boot into a standalone demo of the DigiLinX User Interface.

Additional Demo Options

These options will allow you to further expand your demo to include your choice of skins and to use your own project files. For these options, follow the included instructions then follow the main instruction set above. It is recommended that you first install using the standard skin to test you implementation.

Selecting a Skin

If you want to use a different skin, like carbon fiber follow these instructions. Then follow the main instructions above.

- Go to the folder you unzipped the demo files into.
- Using Windows Explorer, locate where you extracted the digilinx_demo files and find the “Index.swf” file
- Rename it to index.swf (you will need to say yes to the warning message)
- In that same folder you will find a sub folder called “Skins” in that folder locate the skin you want to use. It will be the <name of skin>.swf. For example the carbon fiber skin file is called “carbon fiber.swf”.
- Copy this skin file (right click on the file and choose copy)
- Paste the file into the digilinx_demo folder (right click on the folder and choose paste)
- Rename the file to index.swf. For example, if you pasted “carbon fiber.swf” it would paste as “Copy of carbon fiber.swf”
- Now when you download the index.swf file it will tell the TouchLinX to use the Carbon fiber skin.



- Press the “Erase Files” button
 - Confirm by pressing the “Yes” button
- Now press the “Restart Device” button
- The TouchLinX will restart and come up to a Blue screen saying ”Unable to Load GUI Files”.
 - Update the firmware on the TouchLinX using “Update Devices” in DigiLinX Dealer Setup.
- The TouchLinX will come up again in to the same blue screen. You will need to send a Configuration file to the device to the device.
- Create a project, match the TouchLinX , and a Send Configuration to device. This will return the TouchLinX to a normal state.