

DIGILINX™ Release Notes

Firmware Release Note

DigiLinX Dealer Setup Program Version 2.0

Firmware Release Notes: Version 1.5

PLEASE REMEMBER TO UPDATE THE FIRMWARE OF YOUR DIGILINX SYSTEM USING THE DIGILINX DEALER SETUP PROGRAM BEFORE CONFIGURING THE SYSTEM AT INSTALLATION TO TAKE ADVANTAGE OF THESE GREAT NEW FEATURES!

NEW: Support for DigiLinX™ IP-Based Distribution Video Additions: MediaLinX™ A/V MLAV300 and ViewLinX™ VL100!

Description: The new DigiLinX Dealer Setup Program now includes the ability to add DigiLinX IP-Video products to the project. Add a MediaLinX A/V (MLAV300) to the project for each video source and a ViewLinX VL00 to the project for each display, then add a SwitchLinX™ SW1024 24-port gigabit switch to the rack and you're ready to distribute uncompressed High Definition Video over the network! NOTE: We highly recommend the use of Belden HomeChoice 7876S Two CAT5e 4-pair bonded UTP + 2 RG6.

Benefits: Now you can distribute uncompressed High Definition video to one or multiple displays over the network!



MediaLinX MLAV300

The MediaLinX A/V encodes in real time the HDTV video and audio for distribution over the gigabit network. Choose between Composite, S-Video, Component Video and VGA (1280 x 768) .



SwitchLinX SW1024

Since NetStreams is distributing uncompressed video over a gigabit Ethernet network, a 2-way IGMP gigabit Ethernet switch is required. NetStreams has partnered with DLink and is selling a preconfigured 24-port Gigabit Ethernet switch (SW1024) so you don't have to do the work of configuring a switch! If you need more than 24 ports, a 48 port switch will be available soon.

The ViewLinX decodes in real time the HDTV video and audio for distribution from the gigabit network. Choose between Composite, S-Video, Component Video and VGA (1280 x 768) for a full range of video connection capabilities.



ViewLinX VL100



The Ultimate IP A/V Experience.

Highlights

Page 1

NEW: Support for DigiLinX IP-Video

Pages 2

NEW: Driver for Vantage InFusion Lighting Control!

NEW: Driver for Secant Security system Control!

Page 3

NEW: Easier Static Menus

NEW: Support for New the TouchLinX TL430 and TL700!

Page 4

NEW: Automatic intercom activation with DoorLinX™!

NEW: Adobe® Macromedia® Flash® bug fix!

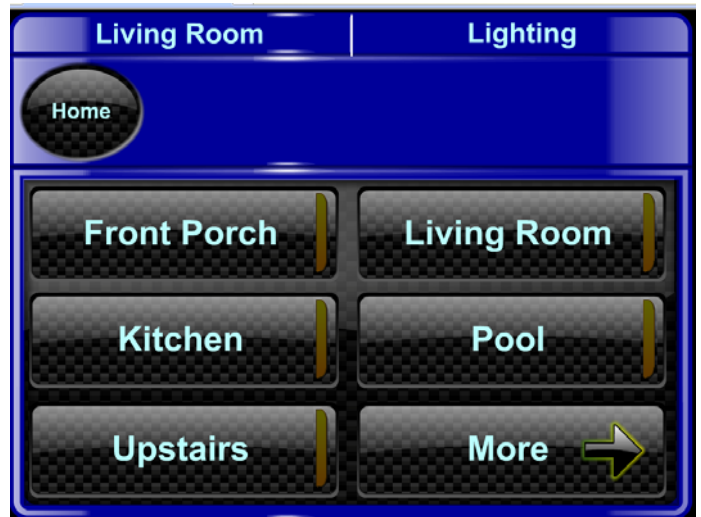
DigiLinX Dealer Setup 2.0 Release Notes Continued

NEW: Driver for Control of Vantage® InFusion Lighting systems!



Description: We've added a driver for control of lighting scenes in the Vantage InFusion lighting system. Connect the InFusion Controller to a *NetStreams ControLinX™* via RS-232 and select the driver from the drop down menu in the *DigiLinX* Dealer setup program v2.0. Program in the Vantage lighting system first and then name the phantom buttons in *DigiLinX* Dealer setup program. For more information, visit the dealer section of the *NetStreams* website and download the application note on integrating Vantage InFusion lighting system with *DigiLinX*.

Benefits: Eliminate unsightly wall acne to comes with multiple controllers in any room. Give your customers control of their Vantage lighting system from the *DigiLinX* user interface.



The Lighting scenes appear for easy selection on the *DigiLinX* user interface (carbon fiber skin shown above)

NEW: Driver for Control of SECANT® Security systems!

Description: The *DigiLinX* Dealer Setup Program 2.0 also includes a driver for control of Secant Security systems. Connect the Secant Security controller to a *NetStreams ControLinX* via RS-232 and select the driver from the drop down menu in the *DigiLinX* Dealer setup program v2.0.



Benefits: Eliminate unsightly wall acne to comes with multiple controllers in any room. Give your customers the ability to arm / disarm their Secant Security system from any *TouchLinX* in their home!

DigiLinX Dealer Setup 2.0 Release Notes Continued

NEW: Easier Static Menus

Description: We've made it easier for you to create static menus by moving the static menus to the top. Now you don't have to click on each individual *SpeakerLinX™* to set the static menus for each room — instead you just select the room from the drop down bar in static menus.

Benefits:

Save even more time programming!



NEW: Support for New TouchLinX TL430 and TL700 larger in-wall touch screens!

Description: You asked for larger touch screen and they're on the way! Fortunately we've already included the TL430 and TL700 as selections in *DigiLinX Dealer Setup Program 2.0* that appear in the drop down box when adding a *TouchLinX* to your project.

Benefits:

Prepare now for the addition of larger touch screens!



TL430 4.3" LCD in-wall touch screen



TL700 7.0" LCD in-wall touch screen

NEW: Playlist support for Streaming Music Manager!

Description: The new firmware version 1.5 embedded in the *DigiLinX* Dealer Setup Program v2.0 includes firmware for the Streaming Music Manager to support play lists. All you have to do is update devices and the firmware on the Streaming Music manager will update.

Benefits: Now your customers can create play lists in M3U format in the shared folder on their networked devices (PC, MAC, etc) and view and select those play lists on any *DigiLinX* user interface. NOTE: the play lists MUST be in M3U format for this to work properly. For more information, please download the latest version of the Streaming Music Manager manual from the dealer section of the website.

NEW: Support for Issues found with existing media servers!

Description: As some of our media server partners have updated their firmware and new products, we have had to address some compatibility issues. The firmware in *DigiLinX* Dealer setup program v.2.0 includes these fixes.

Benefits: Improved system stability and operation with respect to compatible media servers, namely Imerge[®], Escient[®] and Audio Request[®].

REVISED: DRIVER FOR PANORAMA™ with the MediaLinX MLA4000

Description: The new firmware version 1.5 embedded in the *DigiLinX* Dealer Setup Program v2.0 includes a revised driver for *Panorama* support with *DigiLinX*.

Benefits: The revised driver improves the stability of the system operation when *DigiLinX* is integrated with a *Panorama* Multi-Room Video system using a *MediaLinX* PRO MLA4000 or 4 *MediaLinX* MLA101 plus 1 *ControLinX*[™] CL100.

REVISED: Firmware for DoorLinX™ DX100

Description: The new firmware version 1.5 embedded in the *DigiLinX* Dealer Setup Program v2.0 includes firmware for the *DoorLinX* to address doorbell volume and session timeout.

Benefits: Improved system stability and customer satisfaction from those projects in which *DoorLinX* has been or is to be installed.

BUG FIXES FROM DIGILINX DEALER SETUP VERSION 1.70.03

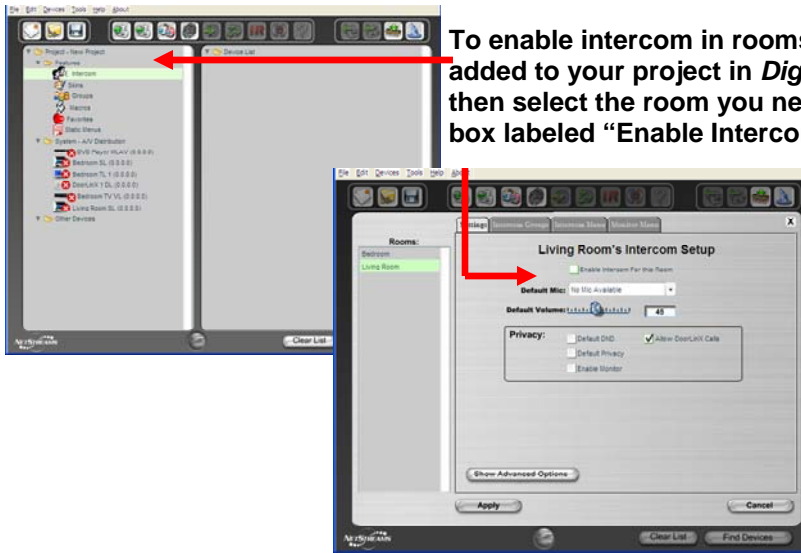
Description: The new firmware version 1.5 embedded in the *DigiLinX* Dealer Setup Program v2.0 includes several bug fixes found within *DigiLinX* Dealer Setup program version 1.70.03, including but not limited to Aprilaire[®] operation, Streaming Music Manager's large file indexing capability, support for iPort[®] firmware modifications made by iPort, and system stability

Benefits: Improved system stability and customer satisfaction with the overall *DigiLinX* system!

Special Notes Regarding this Release:

This release of the *DigiLinX Dealer Setup Program* has been heavily beta tested by a select group of residential and commercial installers. During the course of the beta test, many issues were identified and fixed prior to the release. Please take special note of the following:

1. If you are creating a macro within which you wish to have the *DigiLinX* GUI jump to the HVAC screen after the macro is initiated, that function will only work if you name the service HVAC.
2. As you are aware, adding a *DoorLinX DX100* will automatically activate intercom on all rooms that have been added in the project BEFORE you add that *DoorLinX* to the project file. **If you add a room after the *DoorLinX* has been added, then please remember to enable intercom for that room.**



3. If a control device (**CL100 or control port on a MLA4000**) is initially added to a project with the General Purpose Driver selected, and then later on changed to a GE Security Driver, then you may encounter an issue with a parity bit not being set correctly. To avoid this issue, make sure when you are adding a control device for GE Security that the GE Concord driver is selected in the drop down menu.

If you failed to do this and encounter a problem of GE Concord not communicating with *DigiLinX*, remove the *ControlLinX* from the project, and add a new *ControlLinX* and select the GE Concord driver from the dropdown menu.

4. Always check static menus after modifying room and source names.
5. Always check your macros after modifying room and source names.
6. Please make sure that the project file is loaded and that the devices are matched (yellow or green state) before updating firmware on the devices. Dealer Setup 2.0 will automatically update the desired skin during this process. Failure to do this will cause the "standard skin" to be loaded on devices.
7. When replacing MLA4300 and VL100 devices that have already been matched, sometimes the Match and ID buttons are not highlighted correctly. To correct this situation, erase the serial number text field on the Info page of the device and Apply changes.