

DIGILINX™ Release Notes

Firmware Release Note

DigiLinX Dealer Setup Program Version 1.70

Firmware Release Notes: Version 1.40

PLEASE REMEMBER TO UPDATE THE FIRMWARE OF YOUR DIGILINX SYSTEM USING THE DIGILINX DEALER SETUP PROGRAM BEFORE CONFIGURING THE SYSTEM AT INSTALLATION TO TAKE ADVANTAGE OF THESE GREAT NEW FEATURES!

NEW: Support for IRLinX™ and Network IR with DigiLinX Dealer Setup V 1.70!

Description: The new *DigiLinX* Dealer Setup Software v1.70 includes support for the new *IRLinX* IRL1 and features firmware that enables "Network IR". *IRLinX* is an EIM enabled IR receiver that can connect to either the EIM port on a *SpeakerLinX™* or the RJ45 port on the back of a *KeyLinX™* KL101 or KL201 labeled "*IRLinX*". Network IR is basically the ability to pass through the IR signal from the IR receiver on the *KeyLinX* to the source selected. The IR receiver included with the *IRLinX* can be mounted either horizontally or vertically, allowing for maximum flexibility of placement in the installation.

Benefit: Add IR control of the *DigiLinX* system with the *NetStreams' IRLinX*. Now you can control the entire system using a universal remote control. IR HEX codes for the *DigiLinX* system are available for easy download from the dealer section of the *NetStreams'* website. Additionally, learn the IR codes for the sources so you can control those as well once they are selected.



The *IRLinX* IRL1 is now shipping!



The
IP-Based
Distributed
Entertainment
Company.

Highlights

Page 1

NEW: IRLinX & Network IR Control!

Pages 2

NEW: Support for MediaLinX PRO MLA4000!

Page 3

NEW: Load created .lua Audio Drivers!

Page 4

NEW: Automatic inter-com activation with DoorLinX!

NEW: Macromedia Flash bug fix!

DigiLinX Dealer Setup 1.70 Release Notes Continued

NEW: Support for the MediaLinX™ PRO MLA4000!



Description: MediaLinX PRO (MLA4000) is a 4-channel MediaLinX / ControLinX™ component that also has one additional ControLinX function plus 4 contact closures — all in a single rack space high component. This versatile product allows for a variety of combinations, for example:

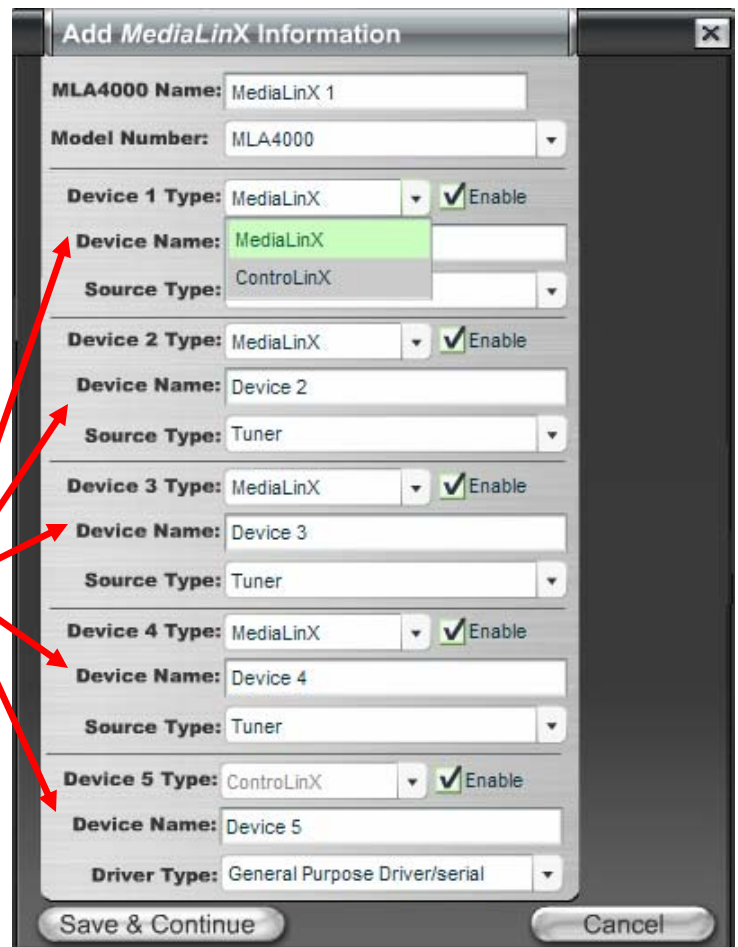
- 4 legacy audio sources + 1 IR/RS-232 controlled subsystem + 4 contact closures...OR
- 3 legacy audio sources + 2 IR/RS-232 controlled subsystems + 4 contact closures....OR
- 2 legacy audio sources + 3 IR/RS-232 controlled subsystems + 4 contact closures....OR
- 1 legacy audio source + 4 IR/RS-232 controlled subsystems + 4 contact closures!



PLEASE NOTE: In order to trigger a relay on the DigiLinX user interface, you must first build a macro with the relay trigger command inserted into that macro. For more information, please see the latest version of the DigiLinX Dealer Setup Manual.

Benefits: The MediaLinX PRO (MLA4000) is extremely versatile and provides for a clean installation (since all of the abovementioned functions are contained in an elegant, one rack space high component). The MLA4000 is also a more economical solution for your customers. Easily integrate any combination of up to 4 legacy audio sources and/or 1~5 subsystems such as lighting, HVAC, security, or other IR/RS-232 controlled systems. Need some ideas??? Use the MediaLinX PRO to integrate a Panorama™ Distributed Video system with DigiLinX. Or how about 1 Polk® XM Tuner, 1 iPort® iPod interface, 1 Lutron® RadioRA® system, 1 Aprilaire® HVAC system and 1 GE® Security Concord v4.0 system — all from one rack component.

When you add a MLA4000 to your project in the DigiLinX Dealer Setup Program 1.70, you must select which type of device will be connected to each channel, name that device, and select the source or driver type.



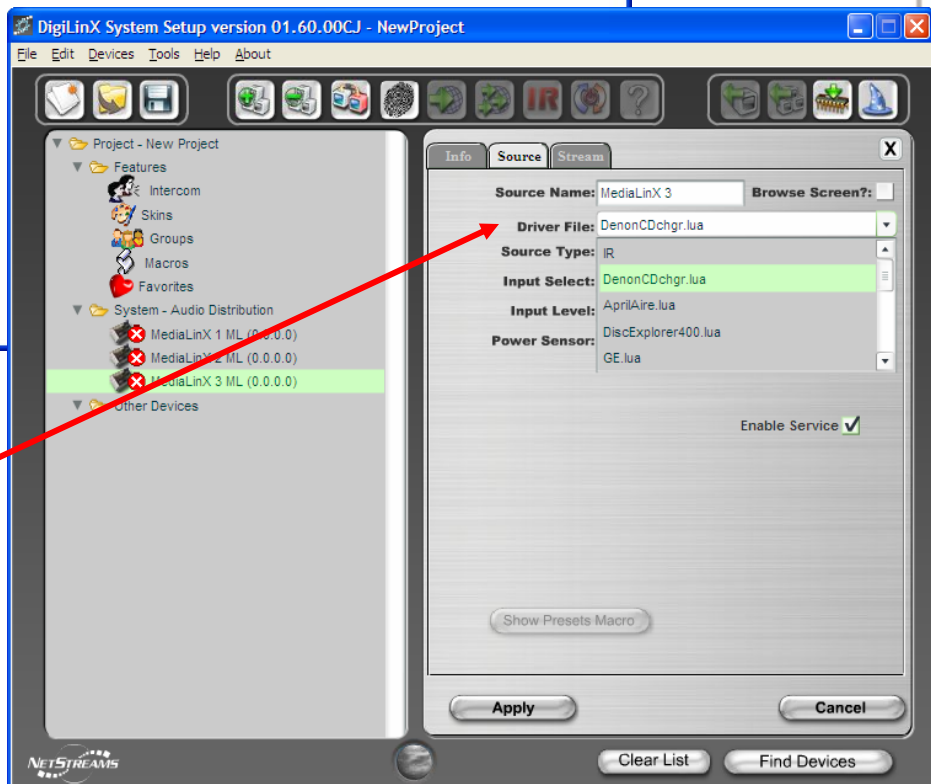
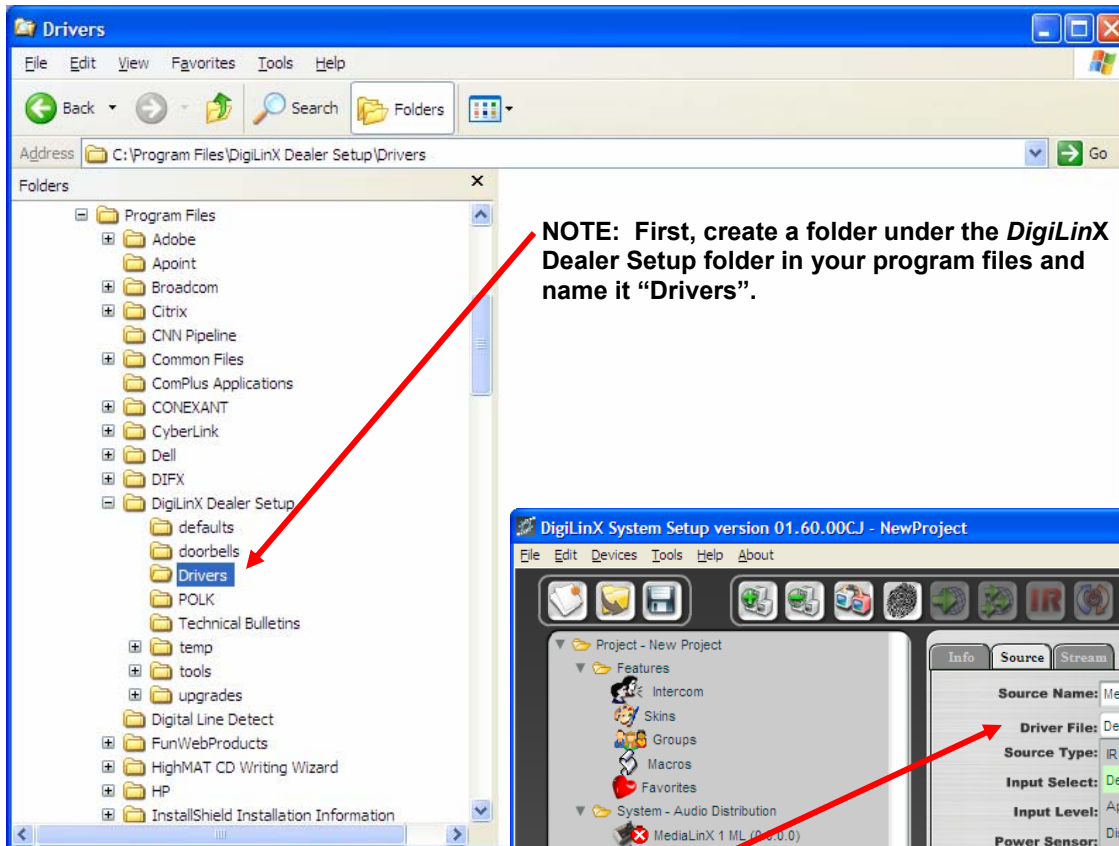
DigiLinX Dealer Setup 1.70 Release Notes Continued



NEW: Load New .LUA Audio Drivers!

Description: The new *DigiLinX Dealer Setup Program* now includes the ability to load and utilize other .lua Audio Drivers. For example, with the new version of ***Creating StreamNet Drivers manual*** available on the dealer section of the website, you can follow the examples and write a 2-way RS-232 to TCP/IP driver for audio equipment, save that driver and then load it after adding a *MediaLinX*. We highly encourage dealers to share drivers they created by visiting the *NetStreams Forums* website at <http://www.netstreamsforums.com>.

Benefits: Expands the versatility and integration aspects of the *DigiLinX* system!



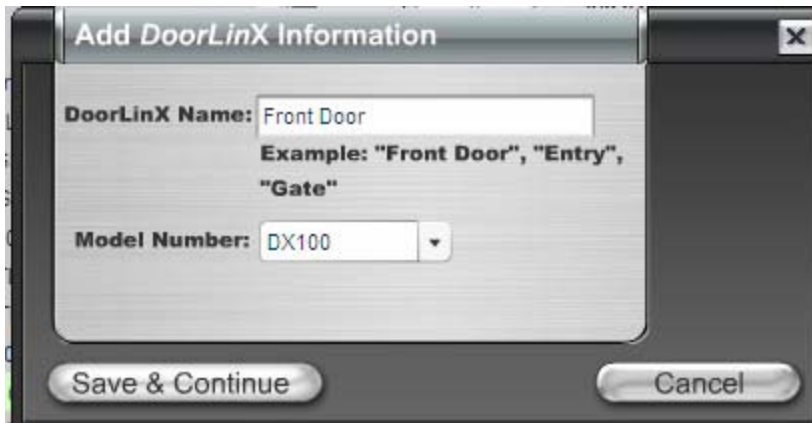
Once you have .lua drivers in that folder, they will appear for selection in the Driver File drop down menu under the Sources tab of the *MediaLinX*.

DigiLinX Dealer Setup 1.70 Release Notes Continued

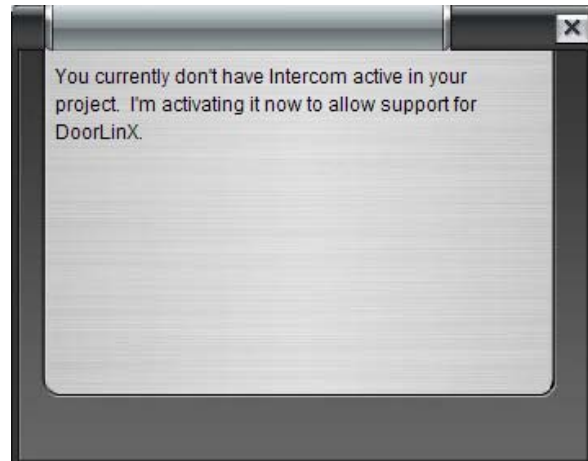
NEW: Automatic Activation of Intercom when a DoorLinX™ is added to the project!

Description: We've made it easier and saved you time in setting up the system by automatically activating intercom in all rooms when a DoorLinX is added to the project.

Benefits: Save time and eliminate the possibility of forgetting to activate intercom in your project. Now when you add a DoorLinX to your project, the intercom function is automatically activated in all rooms. **PLEASE NOTE:** If you want the doorbell and intercom functions to be disabled for a particular room (such as a baby's room), you must manually turn it off in that room.



A pop-up window appears after you add a DoorLinX to your project advising you of the automatic activation.



NEW: Improved TouchLinX™ Stability due to Adobe® Macromedia® Flash® bug fix!

Description: The new firmware version 1.40 includes a code fix for a bug associated with the Macromedia Flash Player used on the TouchLinX. This bug can cause some instability of the TouchLinX by forcing it to freeze up every 24.9 days.

Benefits: This bug fix improves the overall end user experience and will result in more customer satisfaction.