

DIGILINX™ Release Notes

Firmware Release Note

DigiLinX Dealer Setup Program Version 1.40

Firmware Release Notes: Version 1.10

PLEASE REMEMBER TO UPDATE THE FIRMWARE OF YOUR DIGILINX SYSTEM USING THE DIGILINX DEALER SETUP PROGRAM BEFORE CONFIGURING THE SYSTEM AT INSTALLATION TO TAKE ADVANTAGE OF THESE GREAT NEW FEATURES!

NEW: Firmware for New Graphical User Interface 2.0

Description: The new firmware version 1.10 enables a new graphical user interface 2.0 to be shown on the *TouchLinX™*, or any web browser device connected to the *DigiLinX* network (PC, wireless web tablet, PDA).

Benefit: The new graphical user interface 2.0 features elegant icons for easy navigation through selection and control of audio sources, lighting scenes, heating and cooling options, and Panasonic® IP Cameras. We've also added a new 10-key screen for direct tuning of XM radio stations from the Polk Audio® Xrt12 XM Tuner, as well as a DVD Player screen for control of a DVD player connected to a *MediaLinX™*.



Home Page



Audio Source Selection

These top navigation buttons will appear on the player screen whenever the consumer touches the screen.

If no selection is made within 30 seconds, the top navigation buttons will disappear and the size of the meta data (including the cover art) will increase to fill the screen.



The IP-Based Distributed Entertainment Company.

Highlights

Page 1

NEW Graphical User Interface

Page 2

NEW Firmware for *ControlinX CL100* Integration with *Lutron® HomeWorks®* lighting, system

Page 3

NEW: Firmware and dealer setup functions for *SpeakerLinX SL250!*

Page 4

NEW: Firmware and dealer setup menu for integration of the *New Polk Audio® IP Speakers!*

Firmware Release Notes; Version 1.10 Continued

New Graphical User Interface (continued):



New DVD Player control screen for control of DVD player connected to a *MediaLinX* MLA101.



New 10-key screen for direct dial of XM Tuner stations from the Polk XM Tuner connected to a *MediaLinX* MLA101.

NEW! Firmware for *ControLinX*™ CL100, including drivers for Lutron® HomeWorks® Lighting Systems!

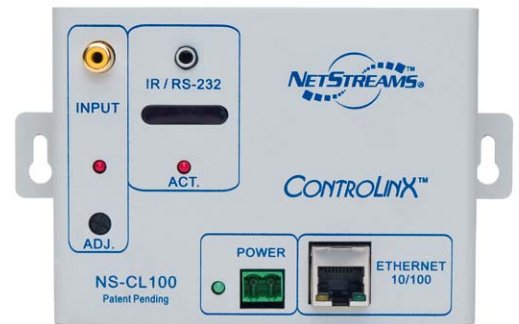
Description: The new firmware version 1.10 includes a driver for the integration of Lutron HomeWorks Lighting system with the *ControLinX* CL100.

NOTE: Make sure you upgrade the firmware on all of your *DigiLinX* devices!

Benefit: Give your customers to ability to control their HomeWorks lighting system from their *DigiLinX* user interface! Turn on or off custom lighting scenes in their home from their *TouchLinX*, wireless web tablet, PDA, or PC! You can name custom Lutron HomeWorks lighting scenes using the *DigiLinX* Dealer Setup version 1.40 and then upload the configuration to the *DigiLinX* system.



Lighting Control User Interface



When using a CL100 to integrate with a Lutron HomeWorks lighting system, you can control up to 17 scenes of lighting from this user interface on your *TouchLinX*, wireless web tablet, PC or PDA. Use the *DigiLinX* Dealer setup version 1.40 to custom name the lighting scenes.

NOTE: Connect the 3.5mm to RS-232 cable from the *ControLinX* CL100 (included) to the Lutron HomeWorks processor (REQUIRED). Use one CL100 per HomeWorks processor.

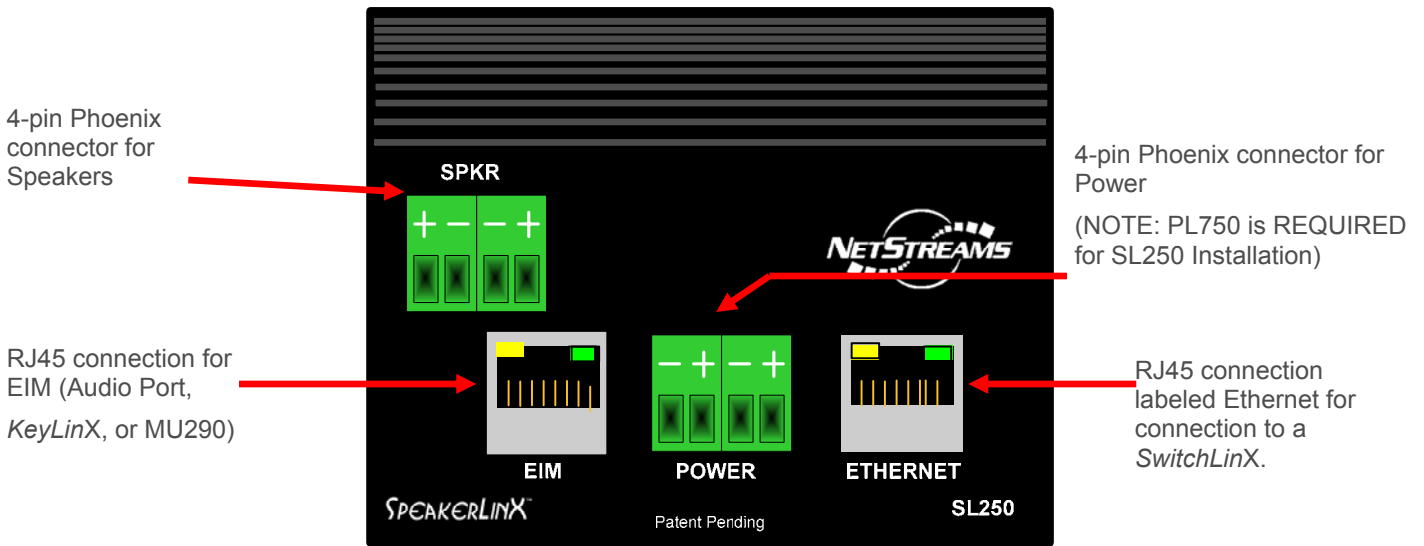
Firmware Release Notes; Version 1.10 Continued

NEW! Firmware for *SpeakerLinX*™ SL250 50-Watt x 2 Intelligent Amplifier / Room Controller!

Description: The *DigiLinX* Dealer Setup program version 1.40 now includes the *SpeakerLinX* SL250 as a choice in the drop down box when adding a *SpeakerLinX* to your project.

Benefit: Need an IP-Based amplifier with more power for larger rooms? The *SpeakerLinX* SL250 fits the bill, including a 50-Watt x 2 digital amplifier, as well as a 5-band EQ for improved customization of the sound quality in the room and 12 DSP presets which the consumer can select from the new graphical user interface.

***SpeakerLinX* SL250 Connections**



The new *SpeakerLinX* SL250 features a 5-band graphic equalizer which allows custom installers to further fine tune the sound in dealer setup, and, if desired, the consumer to adjust the sound from any graphical user interface.

Of course, custom installers can choose to “lock out” the end user from making adjustments using the 5-band graphic equalizer.



The new *SpeakerLinX* SL250 also features 12 DSP presets which are available on any user interface (*TouchLinX*, PC, wireless web tablet, PDA) for the consumer.

Firmware Release Notes; Version 1.10 Continued

NEW! Dealer Setup now features Polk Audio IP Speakers as a selection when creating a project!!

Description: The *DigiLinX* Dealer Setup program version 1.40 now includes the Polk IP Speaker (shipping January 2006) as a selection when creating a project. **NetStreams StreamNet*™ Module (sold separately) is required.

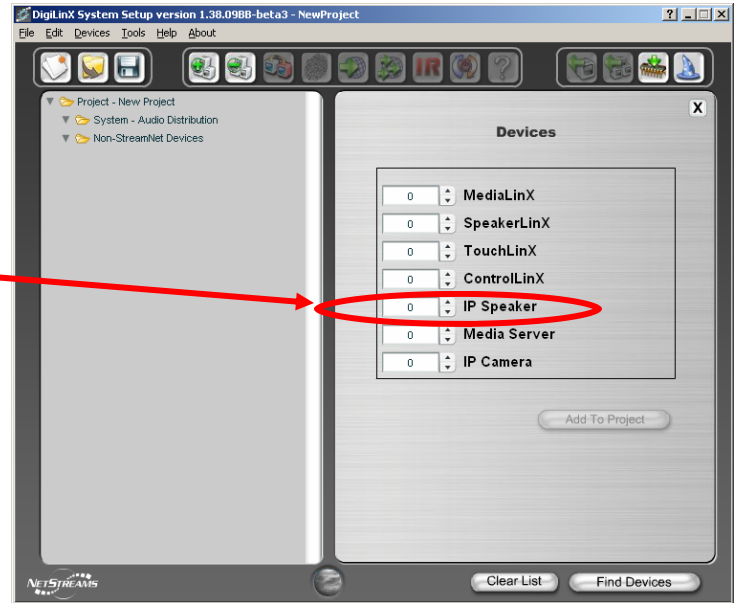
Benefit: Now you can create projects for your installations taking place after January 2006 using the Polk IP Speaker with the *NetStreams StreamNet* (SN1000) module inserted. For rooms that are utilizing the Polk Audio IP Speaker, no *SpeakerLinX* is required as the *StreamNet* module functions as such.



SN1000 StreamNet Module



When creating your *DigiLinX* project or adding devices to your *DigiLinX* project, using *DigiLinX* Dealer Setup Program 1.40, IP Speaker now appears as a selection.



Both models of Polk Audio IP Speakers appear in the drop down box when adding an IP Speaker to your *DigiLinX* project.

*Please note, a *StreamNet* Module (SN1000) must be inserted into the speakers to make them IP-Based. More information forthcoming in an Application Note.

DigiLinX Dealer Setup version 1.40 also includes an advanced setup for the Polk Audio IP Speakers. This is available under the audio tab once you click on an IP Speaker in your project. Advanced setup allows you to optimize the sound quality by inputting information about the room that these speakers are installed in and their location in the room. For more information, please see the *DigiLinX* Dealer Setup Manual version 1.40 available from the dealer section of the *NetStreams* website.

