

# DIGILINX™ Release Notes

## Firmware Release Note

### DigiLinX Dealer Setup Program Version 1.36

#### Firmware Release Notes: Version 1.04.00

PLEASE REMEMBER TO UPDATE THE FIRMWARE OF YOUR DIGILINX SYSTEM USING THE DIGILINX DEALER SETUP PROGRAM BEFORE CONFIGURING THE SYSTEM AT INSTALLATION TO TAKE ADVANTAGE OF THESE GREAT NEW FEATURES!

#### NEW: Firmware and Menus for MLA101 & Polk Audio® XRt12 XM Tuner

**Description:** The new firmware version 1.04 menu functions and the MLA101 as a selection for adding devices (required if you are using the MLA101). The MLA101's will be available at the end of May.

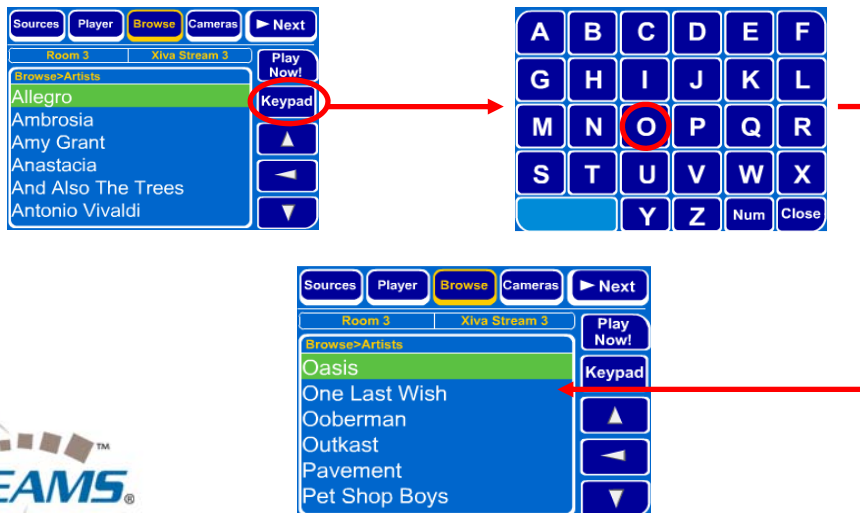
**Benefit:** Now seamlessly integrate *DigiLinX* with the Polk Audio XRt12 XM Tuner using the *MediaLinX* MLA101 and 3.5mm to RS232 cable (sold separately). Browse through stations on the *TouchLinX*, PC, Web Tablet, or PDA viewing station cover art, station name & song title.

#### **NEW: Easier Menu Navigation for Compatible Media Servers!**

**Description:** The new firmware version 1.04 adds two keypad pages to the browse function of the *DigiLinX* Graphical User interface, increasing the speed of the browsing function.

**Benefit:** New Media Indexing feature allows you to easily jump straight to the artist, track or genre title that you want without having to hit the scroll button on the *DigiLinX* graphical user interface multiple times. Users can choose selections by the first letter of the alphabet or by number (if a number is used in the song title).

For example, if the user wants to find all songs by Oasis on my media server quickly, in the browse menu of the GUI, first select artist and then press the KEYPAD button and then select "O" on the keypad. All artists starting with the letter "O" will appear on the user interface.



The IP-Based Distributed Entertainment Company.

## Highlights

### Page 1

NEW Firmware for MLA101 and Polk Audio XM Tuner!

NEW Easier Menu Navigation for all compatible Media Servers!

### Page 2

NEW Easier Programming with New Interface

**Firmware Release Notes: Version 1.04.00 Continued**

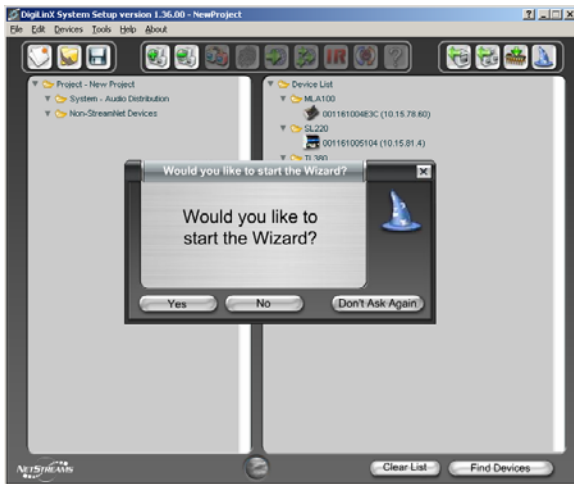
**NEW: Easier Programming — The Wizard Meets the Advanced Program**

**New DigiLinX Dealer Setup 1.36 Merges the Wizard with the Advanced Program with step by step instructions!**

**Description:** DigiLinX Dealer Setup Program has a new look which merges the wizard with the advanced functions, for easier programming. The wizard, when selected, easily guides you through programming while highlighting the appropriate button on the top tool bar of the Advanced DigiLinX Dealer setup program. Viola! One program, easier to use!

**Benefit:** The wizard easily guides you through how to program and you can take advantage of some of the Advanced settings without having to exit the wizard. Download our new DigiLinX Dealer Setup Program Version 1.36 Manual from the dealer section of our website ([www.netstreams.com](http://www.netstreams.com)).

As you navigate through the wizard to program, the corresponding button on the top tool bar of the Advanced DigiLinX Dealer Program is highlighted, to teach you how to use the Advanced Program if you want to in the future.



The wizard now appears in the same screen of the Advanced DigiLinX Dealer setup program, and guides you through step by step in updating firmware, creating a new project, matching devices, editing settings on those devices, and finally sending configuration files.

At any point in time you can save your project and directly access the next step by selecting one of the blue buttons below!



**COMING SOON! Seamless Integration with Imerge<sup>®</sup> Music Servers!**

You'll notice that Imerge is now a selection for StreamNet<sup>™</sup>-Enabled Media Servers in the DigiLinX Advanced Dealer Setup Program v1.36. We wanted to

make sure you were ready as soon as Imerge releases products with new firmware beginning July 2005. Imerge is validating our tests now and everything looks great! (NOTE: Imerge products are not field firmware upgradeable. They will be announcing a new manufacturing run by serial numbers for DigiLinX compatibility.

