

# DIGILINX™ Release Notes

## Firmware Release Note

### DigiLinX Dealer Setup Program Version 1.42

#### Firmware Release Notes: Version 1.21

PLEASE REMEMBER TO UPDATE THE FIRMWARE OF YOUR DIGILINX SYSTEM USING THE DIGILINX DEALER SETUP PROGRAM BEFORE CONFIGURING THE SYSTEM AT INSTALLATION TO TAKE ADVANTAGE OF THESE GREAT NEW FEATURES!

#### **NEW: Firmware for More Stable Performance of IP Camera Viewing!**

**Description:** The new firmware version 1.21 features more stable performance when viewing the feed from a compatible IP Camera via a *TouchLinX™* over a long period of time.

**Benefit:** Now for those homeowners that use a *TouchLinX* to view one or multiple feeds from a compatible IP camera over a long period of time will experience more stability in terms of the feed itself.

#### **NEW: Additional Models of Panasonic® IP Cameras Included!**

**Description:** The *DigiLinX* Dealer Setup Program version 1.42 now includes additional Panasonic IP cameras for selection in the drop down list when adding an IP camera to your project. The Panasonic **KX-HCM110A** and **BL-C10** have been added.

**Benefit:** More choices for our dealers in terms of IP Cameras that have been tested and integrated with the system!



The  
IP-Based  
Distributed  
Entertainment  
Company.

## Highlights

### Page 1

**NEW Improved Stability  
for long term viewing of  
IP Cameras!**

**NEW Additional models  
of IP Cameras!**

### Page 2

**NEW Firmware for  
muting audio from  
a KeyLinX!**

**NEW: Smarter  
Assignment of Streams!**

**NEW: Improved Design  
Rules Check Function!**

**Firmware Release Notes: Version 1.21 Continued**

**New Firmware for Muting the Audio on a KeyLinX™ KL100 or KL200:**

**Description:** The new firmware version 1.21 also enables a the lower left hand button on the KeyLinX KL100 and KeyLinX KL200 to function as a “MUTE” button. All future shipments of these products will include revised buttons that say MUTE (KL100) or TALK/MUTE (KL200).

**Benefit:** Now your customers can mute the audio in their room using their KeyLinX KL100 and KL200.

KL200: Talk button also now Mutes Music

KL100: \* Button now mutes music.



**NEW! Smarter Auto Assigning of Streams from a Compatible Media Server!**

**Description:** The new version of DigiLinX Dealer Setup (1.42) now auto assigns streams more intelligently so in order to avoid potential conflicts with stream management, IP Intercom and room monitoring.

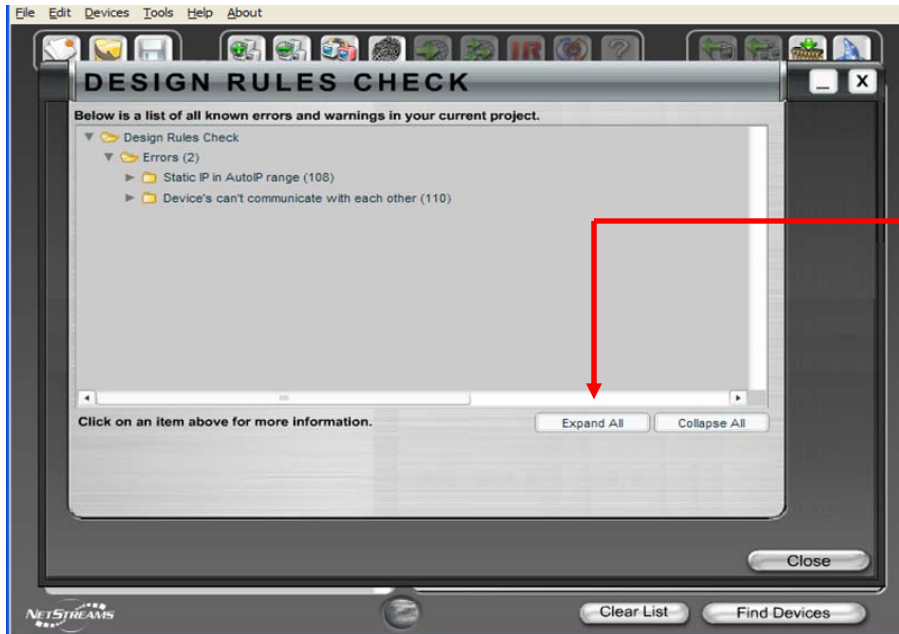
(see previous technical bulletin on IP Intercom, Room Monitoring in rooms with a SpeakerLinX™ and KeyLinX installed).

**Benefit:** Easier programming for you!

**NEW & Improved! Design Rule Check Function!**

**Description:** The new version of DigiLinX Dealer Setup (1.42) features some improvements to the Design Rules Check function by including the ability to check your project for IP address and subnet conflicts, duplicate room names or services names, an expanded list of illegal characters.

**Benefit:** Save time and check your project first before sending the configuration files to all devices! Design Rules Check Function in Dealer Setup can save you the trouble of a phone call to technical support.



To Check your Project in Dealer Setup:

1. Go to TOOLS on the top tool bar and select Design Rules Check.
2. If there are any errors, they will appear in the pop up window.
  - Click on the EXPAND ALL button to expand the list of errors and see what settings on what devices need to be modified.

Once you make your modifications, run the Design Rules Check function again to double check your project is correct and then send the configuration files to your system.