

# DIGILINX™ Release Notes

## Firmware Release Note

### DigiLinX Dealer Setup Program Version 1.43

#### Firmware Release Notes: Version 1.23

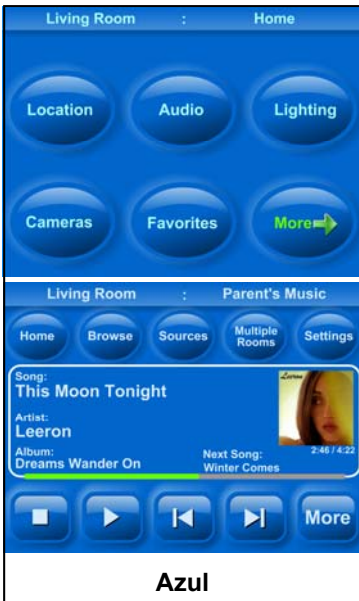
PLEASE REMEMBER TO UPDATE THE FIRMWARE OF YOUR DIGILINX SYSTEM USING THE DIGILINX DEALER SETUP PROGRAM BEFORE CONFIGURING THE SYSTEM AT INSTALLATION TO TAKE ADVANTAGE OF THESE GREAT NEW FEATURES!

#### NEW: Intelligent Personalization with Standard & Designer Skins

**Description:** The new firmware version 1.23 features the ability to choose from different "standard" or "designer" skins. In fact, each room can have a different user interface in an installation. Standard skins are basic templates for which you can adjust the color of the background, button color, and font color. Designer skins are feature rich graphics and have been especially designed as a themed user interface for our 2006 collection. Designer skins are free for a limited time, and of course, we recommend you charge your customer for any skin.

**Benefit:** Make more money by offering your customer different custom user interfaces for each room without any programming on your part. Choose the skin you desire for each room in dealer setup by simply selecting it. This is what NetStreams calls "Intelligent Personalization."

#### Standard Skins: (you can colorize these any way you want)



Check out the designer skins on the next page!

The IP-Based Distributed Entertainment Company.

## Highlights

### Page 1

NEW: Standard and Designer Skins!

### Page 2

NEW: iPod™ Integration with MediaLinX™!

NEW: Discrete IR codes for streams!

### Page 3

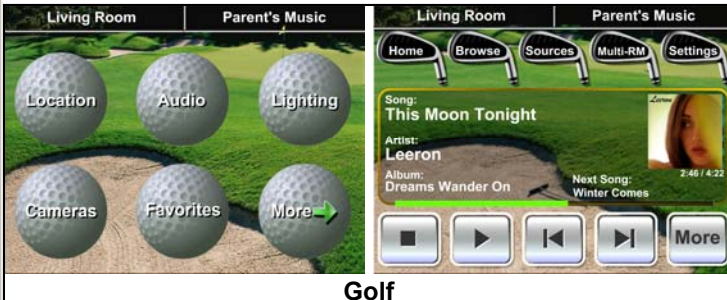
NEW: Program a hard button on a TouchLinX™ to control lighting!

NEW: Additional Models of Plug & Play Panasonic IP Cameras!

**Firmware Release Notes: Version 1.23 Continued**

**Designer Skins: (free for a limited time)**

**New! Plug and Play iPort integration with MediaLinX**



**Golf**



**Renaissance**



**Monet**



**X-Power**

**MLA101:**

**Description:** In *DigiLinX* Dealer Setup version 1.43, iPort now appears as a source selection when adding a *MediaLinX* MLA101 to your project. Of course, we recommend using the IW-4 or IW-5 in-wall models, or the FS-4, or FS-5 free standing models so meta data (song title, artist, album) appears on any *DigiLinX* user interface for easy selection.

**Benefit:** Offer your customers the ability to easily select and listen to their favorite songs from their iPod throughout their home.



**NEW! Firmware to support discrete IR codes for the KeyLinX™...and then some!**

**Description:** The new version of *firmware* (1.23) includes support for the discrete HEX codes posted in the *DigiLinX* section of our dealer website. These Hex codes can be used to program a pronto to control all of the sources available for that room with discrete codes.

**Benefit:** Easier programming of a universal remote control for you and easier remote control for your customers.

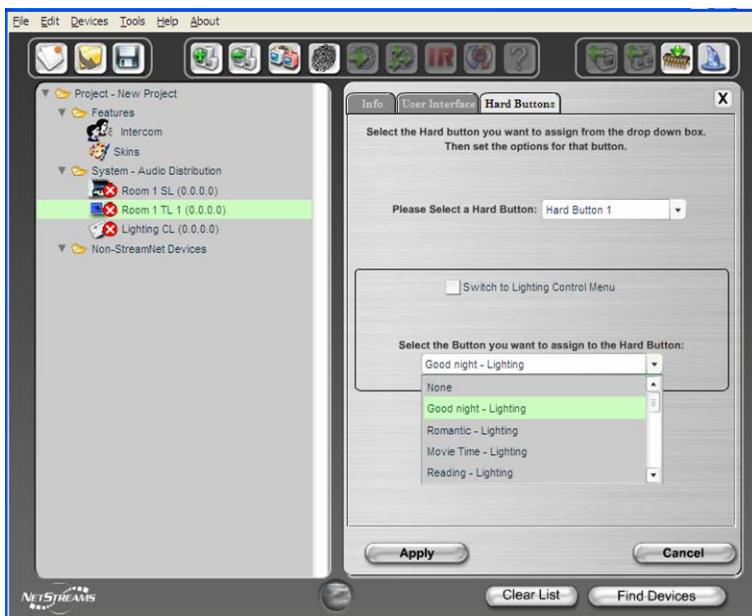
NOTE: This is for rooms that have a *KeyLinX*™ only.

**Firmware Release Notes; Version 1.23 Continued**

**NEW! Programming the top Hard button on a TouchLinX™ to control lighting.**

**Description:** The new version of *DigiLinX Dealer Setup* (1.43) now gives you the ability to assign the top Audio button to control the lights instead. You have two choices — set it to control a scene of lighting or switch to the lighting menu automatically when you touch the top button.

**Benefit:** Eliminate unsightly wall acne and set a hard button for easy lighting control on your *TouchLinX*.



Program the AUDIO button to control a lighting scene.

**New! More Panasonic® IP Camera Models to choose from:**

**Description:** We've added even more models of Panasonic IP Cameras to choose from when adding an IP Camera to your project using *DigiLinX Dealer Setup* version 1.43. Plug and Play compatible models now include:

- BB-HCM381A
- BB-HCM371A
- BB-HCM311A
- KX-HCM250
- KX-HCM280
- KX-HCM110A
- BL-C10
- BL-C30A
- KX-HCM311A



**Benefit:** More choices of more models of Panasonic IP cameras that are plug and play with *DigiLinX*. Just select the model you're using from the drop down box and you're good to go!