



## DoorLinX DX100

### IP-Based Doorbell/Intercom

DoorLinX brings the DigiLinX IP intercom to the door station. This door station serves as an intercom, doorbell, and door latch relay. Each DoorLinX includes a 4 watt speaker and microphone, memory for an MP3 to be used as a doorbell, door latch relay, and connections to the doorbell button. When the doorbell button is pushed an installer selected MP3 file is played through the DigiLinX system and a message pops up on each TouchLinX prompting the user to: establish an intercom session, view the assigned camera, trip the door latch relay or ignore the caller. DoorLinX is ideal for the front or back door, and for gate access.



# DX100

- IP Based Intercom DoorStation
- Metal faceplates with matching doorbell
- Customizable Doorbell Ringtones (MP3)
- IP Camera Integration
- Built in Door Latch Relay
- Streamnet™ Connected

#### ■ IP Based Intercom Door Station

DoorLinX is a vertically mounted, 2-gang device used to extend the DigiLinX IP Intercom to a door station. Using a built in 4 watt speaker and high sensitivity microphone allows any IP intercom capable interface to establish an intercom session with the DoorLinX.

#### ■ Metal Faceplates with matching doorbell

Sold separately are metal faceplates (Brushed Nickel, Brushed Brass, and Oil-rubbed Bronze/Venetian). These faceplates protect the exposed side of the DoorLinX while providing an elegant look to the door station. Also included with the faceplate is a matching doorbell button with matching cover plate.

#### ■ Customizable Doorbell Ringtones (MP3)

DoorLinX replaces the traditional doorbell chimes by playing an MP3 file through DigiLinX when the doorbell button is pressed. The MP3 file is played in designated zones that are chosen by the installer. The MP3 must be less than 500Kb and must use Constant Bit Rate encoding (CBR).

#### ■ IP Camera Integration

DigiLinX already displays content from IP Cameras to the TouchLinX. Up to 4 cameras (1 primary and 3 secondary) can be assigned to a DoorLinX. When the doorbell button is pushed a button appears on the TouchLinX allowing the user to "see" who is at the door before establishing and intercom session. These cameras are also available for general use in the DigiLinX system.

*The Ultimate IP A/V Experience*

# DoorLinX DX100

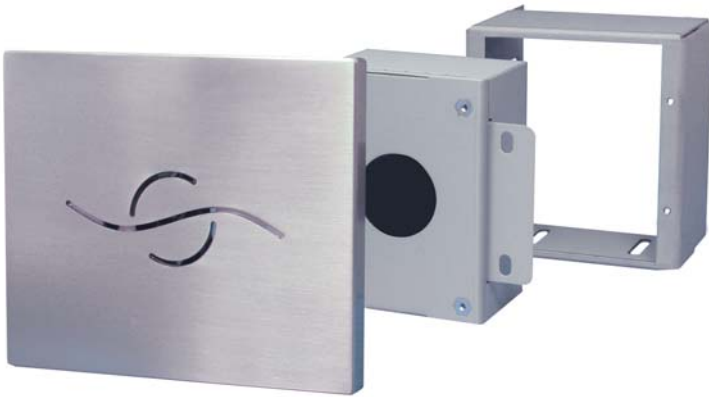
## Features

### ■ Built-in Door latch relay

Included on the DoorLinX is a relay for connecting to a third-party electronic door latch device. When the relay is tripped a door latch system activates. This relay can also be triggered by a DigiLinX macro.

### ■ StreamNet™ Connected

NetStreams Patent-pending StreamNet Technology provides the backbone for DigiLinX. StreamNet technology ensures that audio between all zones are within 500 microseconds of each other; StreamNet Connected devices work seamlessly together; and can be updated in the future as new features become available.



Metal Faceplates with matching doorbell  
Sold separately are metal faceplates  
(Brushed Nickel, Brushed Brass, and  
Oil-rubbed Bronze(Venetian)).



## Specifications

Speaker .....	8 Ohms 4-watt, sealed back mylar cone
Frequency Range .....	200Hz ~20kHz
SPL .....	85dB (+/-3)
Microphone .....	high-gain, omni-directional condenser
Door Latch Relay .....	.2A contact rating (2-pin Phoenix connector)
Connectors .....	one (1) Ethernet RJ45 (EIA 568a) 2-pin Phoenix Connector (28V power)
In-wall dimensions (backbox) .....	4.17" x 3.7" x 1.96" (W x H x D) .....
	(106mm x 94mm x 50mm)
Fits standard 2 gang box mounted vertically (available from NetStreams)	
Outside dimensions (faceplate) ..	4.3" x 5.1" x 0.4" (W x H x D) .....
	(110mm x 130mm x 10mm)
Weight .....	0.74 lbs (0.33 kg) (backbox with electronics)
Weight .....	0.74 lbs (0.33 kg) (rough-in bracket)
Weight .....	1.51 lbs (0.68 kg) (faceplate)
Weight .....	0.13 lb (0.05 kg) (doorbell with button and mount)
Operating Temperature .....	0 to 50 Celsius
NetPower™ .....	1

**StreamNet™**  
CONNECTED

NetStreams, DigiLinX, DoorLinX, SpeakerLinX, SwitchLinX, MediaLinX, TouchLinX, ViewLinX, NetPower and StreamNet are trademarks of NetStreams LLC. All other trademarks are registered by their respective companies.

## Excellence in Design

NetStreams is focused on providing high quality networked digital A/V systems. By leveraging its patent pending technologies and applications, NetStreams is creating the future of IP A/V - today.

**Support** - NetStreams offers world-class support for all products.

Email-support@netstreams.com or toll free - 866.353.3496

