

IP Intercom

The IP intercom allows you to communicate between rooms using the Talk/Mute button on a TouchLinX TL380/TL430/TL700 or the Talk button on a KeyLinX KL200/201 keypad. To configure the IP Intercom for use, complete the following steps:

1. Click on the Intercom icon () in the Project Area of the Dealer Setup window.

The first time you configure IP intercom, you are given the option to activate the Intercom for all applicable devices. (see Figure 18-1).

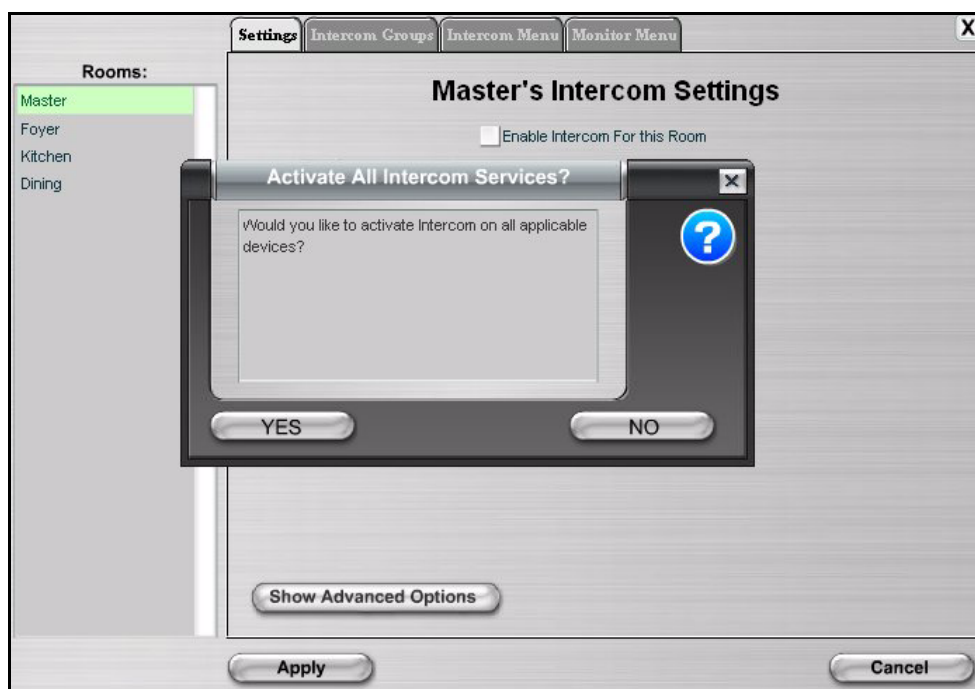


Figure 18-1 Room Intercom Settings

2. Select **Yes** to activate the intercom on all applicable devices in that room. The dialog box closes and the Intercom feature is enabled on all devices (see Figure 18-2). You can now select a room and configure the intercom and monitoring features for the selected room.

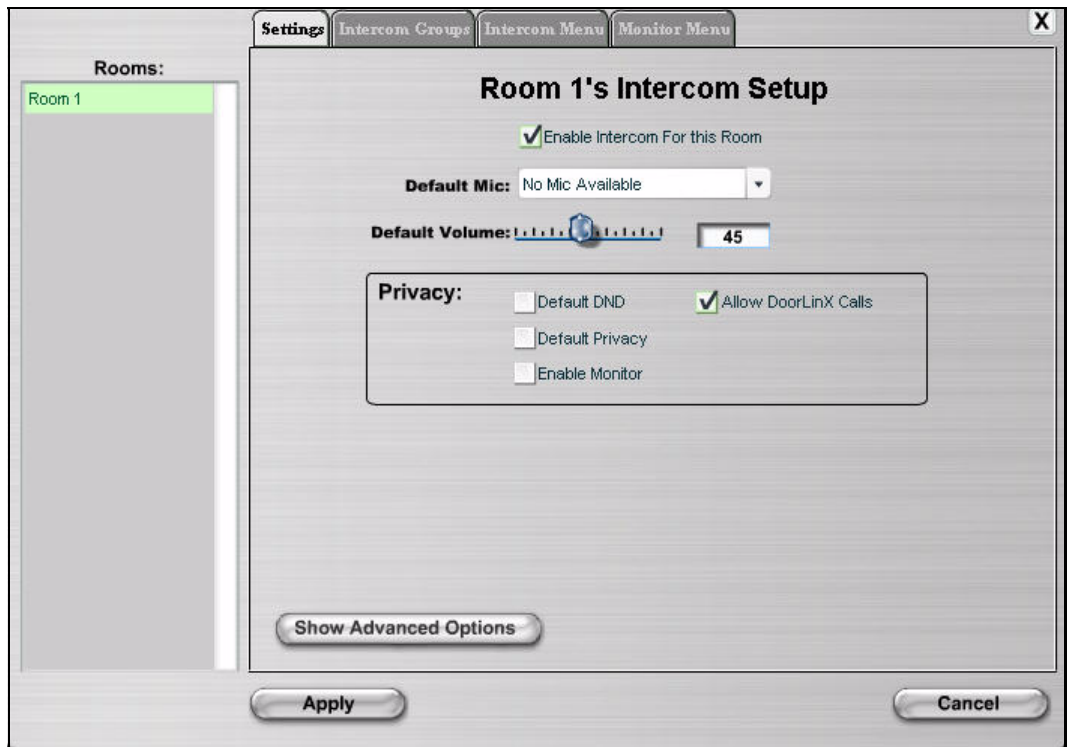


Figure 18-2 Room 1 Intercom Settings

Settings

The Settings tab allows you to set intercom and monitoring features.

1. Select **Advanced Options**.

The Advanced Options are added to the display (see Figure 18-3).

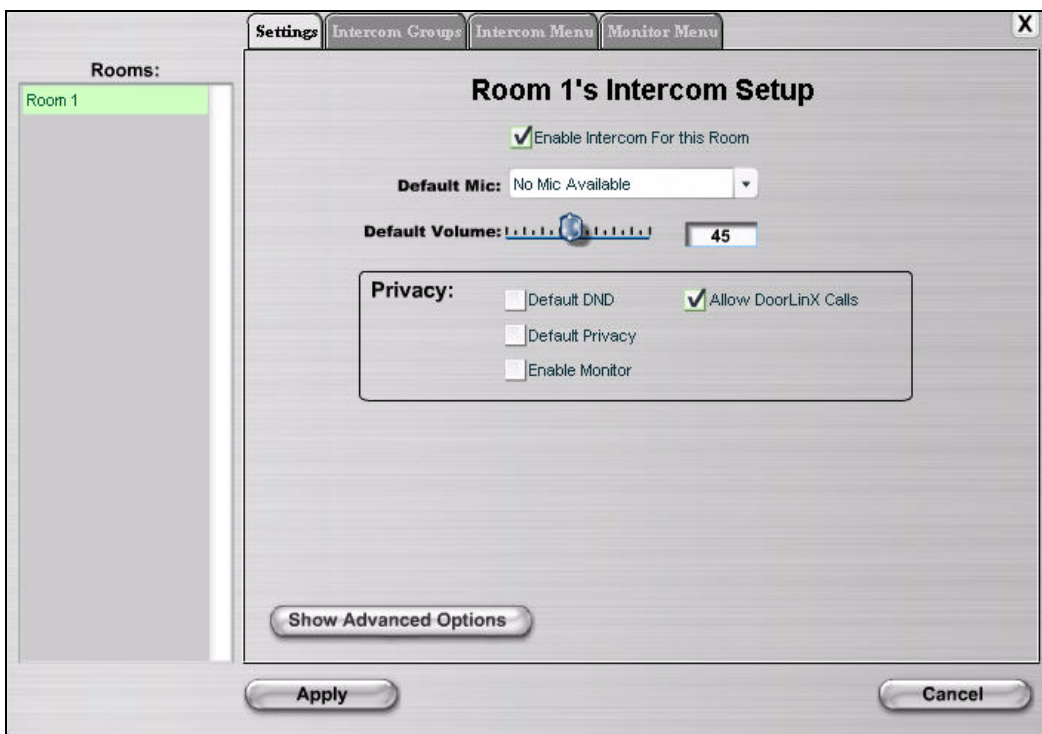


Figure 18-3 Advanced Options screen

The Advanced Options screen allows you to edit settings as shown in Table 18-1.

Table 18-1
IP Intercom Advanced Options

Screen	Selection	Description
Advanced Options	Enable Intercom for this Room	Turns the intercom on or off in a room.
	Default Mic	Lets you choose which device's microphone to use.
	Default Volume	Allows you to adjust the intercom volume level.
	Privacy	Includes the following options: <ul style="list-style-type: none"> <input type="radio"/> Default DnD - when the system is restarted, means that the room is accepting no incoming intercom calls. <p>NOTE: You can change this setting from the TouchLinX by pressing DnD on or off. If a KL200 is involved and DnD is on, the DND light on the KL200 will light up.</p> <ul style="list-style-type: none"> <input type="radio"/> Default Privacy - when the system is restarted, the room cannot be monitored. <p>NOTE: You can change this setting from the TouchLinX by pressing Privacy on or off. If a KL200 is involved and Default Privacy is on, the DND light on the KL200 will light up.</p> <ul style="list-style-type: none"> <input type="radio"/> Enable Monitor - when selected, you are able to monitor that room <input type="radio"/> Allow <i>DoorLinX</i> Calls - when selected, it allows <i>DoorLinX</i> calls.

Table 18-1
IP Intercom Advanced Options

Screen	Selection	Description
	Advanced Options	Includes the following options: <input type="radio"/> Enable Intercom for All Rooms - enables monitoring and incoming calls for all rooms. <input type="radio"/> Disable Intercom for All Rooms - disables monitoring and incoming calls for all rooms.

2. Select **Apply** to apply any changes.

Intercom Groups

The Intercom Groups tab shows the intercom groups associated with a selected room room.

1. Select the **Intercom Groups** tab.

The Intercom Groups screen displays (see Figure 18-6). On the left side are the Available Groups (groups you can choose from to build this menu). The Intercom Groups show you which groups are currently activated for that room.



Figure 18-4 Intercom Groups screen

2. You can:
 - Select a room in Available Groups, click the right arrow, and move it to the right column so that the intercom group is enabled for that room.
 - Select a room that is currently being monitored in the Intercom Groups column and click the left arrow to move it to the Available Groups so that the intercom group is disabled for that room.

- ❑ Add All - adds all rooms to the right column so that all rooms have the intercom group enabled.
- ❑ Clear All - moves all rooms to the left column so that no rooms have the intercom group enabled.
- ❑ Move room names up and down in the Intercom Groups column using the up and down arrow keys.

Creating a New Intercom Group

To create a new intercom group, complete the following steps:

1. Select the **Create New Group** button.
A dialog box displays (see Figure 18-5).



Figure 18-5 New Group dialog box

2. Enter a name for the group you want to create.
3. Select the rooms you want associated with that group (rooms that will be intercom-enabled when that group is selected).
4. Select **Add**.

The group name is placed in the **Intercom Groups** column.

Intercom Menu

From the Intercom Menu, you can create a menu of rooms and groups for which the selected room can establish an intercom session.

1. Select the **Intercom Menu** tab.

The Intercom GUI Setup screen displays (see Figure 18-6). On the left side are the Available Rooms/Groups (rooms you can choose from to build this menu). The Intercom Menu column shows you what the menu for the GUI will look like.



Figure 18-6 Intercom Menu

2. You can:

- Select a room or group in Available Audiences, click the right arrow, and move it to the right column so that the intercom is enabled for that room.
- Select a room or group that is currently being monitored in the Intercom Menu column and click the left arrow to move it to the Available Audiences so that the intercom is disabled for that room.
- Add All - adds all room or groups to the right column so that all rooms have the intercom enabled.
- Clear All - moves all room or groups to the left column so that no rooms or groups have the intercom enabled.
- Move room names up and down in the Intercom Menu column using the up and down arrow keys.

3. Select **Apply** to accept changes.

Monitor Menu

The Monitor Menu allows you to create a list of rooms that the selected room is allowed to monitor.

1. Select the **Monitor Menu** tab.

The Monitor Menu screen displays (see Figure 18-7).



Figure 18-7 Monitor GUI Setup

2. To create the menu of rooms:
 - select the room from the Available Rooms then click the right arrow to move it into the Monitor Menu column so that the room is monitored.
 - select the room from the Monitor Menu column and then click the left arrow to move it into the Available Rooms to Monitor list so that the room is not monitored.
 - Clear All - clears all rooms from the Monitor Menu column and adds them to the Available Rooms column.
 - Add All - clears all rooms from the Available Rooms column and adds them to the Monitor Menu column.
3. Select **Apply** to accept changes.

Sending the Configuration Files

After making any changes to the IP Intercom, send the configuration to the device (see *Sending the Configuration Without the Wizard* on page 6-2).

