

Using Static Menus

The *DigiLinX* system defaults to all sources and all rooms to appear on all user interfaces throughout the house. If the installer wants to limit the available sources or rooms from the user interface menu in the room that a *SpeakerLinX* or *TouchLinX* is installed in, a static user menu must be created. Static menus are menus that appear for selection in that room. To alter static menu information, click on Static Menus in the left window pane as shown in.

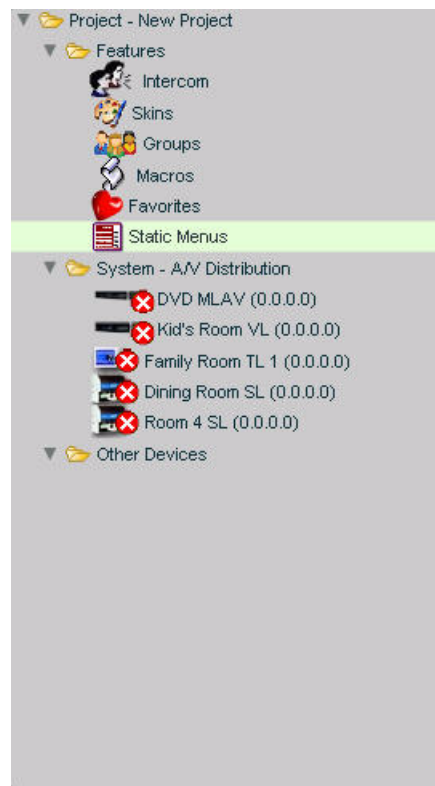


Figure 17-1 Static Menus

After you select Static Menus, the following screen appears.

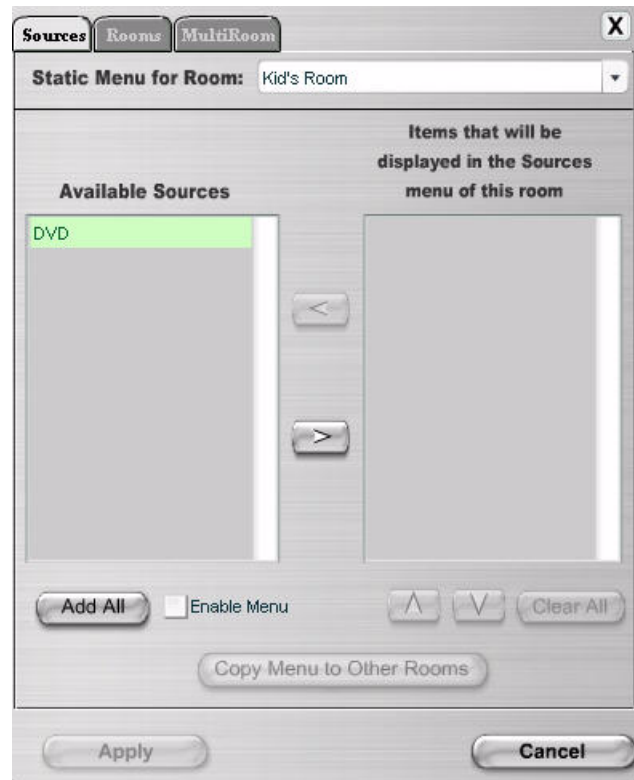


Figure 17-2 Sources Tab

From this screen, you can select from the list of Available Sources using the right arrow key to move them into the list of Items that will be displayed in the Sources menu of this room. You can also enable or disable the menu for this room by clicking on the Enable Menu checkbox.

Select the **Rooms** tab. The following screen appears.

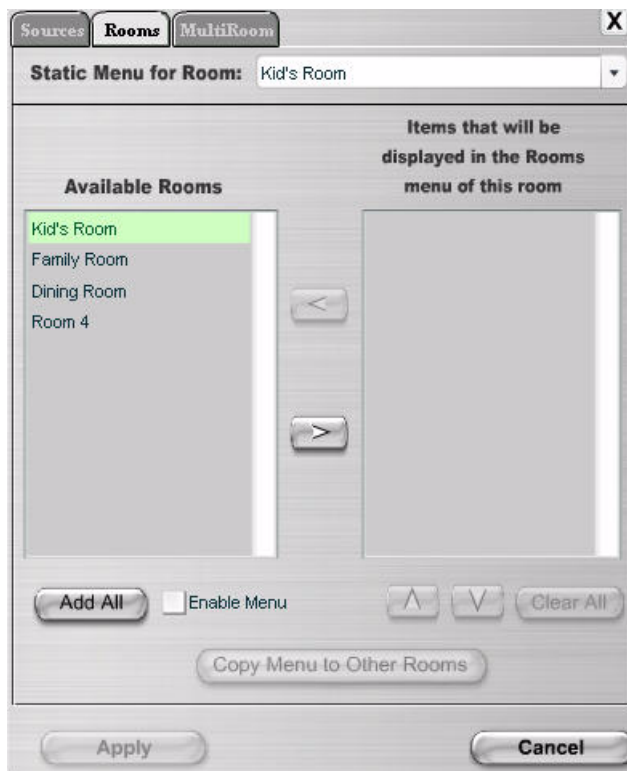


Figure 17-3 Static Menus Room Tab

The Static menus tab allows you to move available rooms into Items that will be displayed on the Rooms menu of this room for the room that the *SpeakerLinX* or *TouchLinX* is located in. Select the right arrow to move the available rooms to the Items that will be displayed in the Rooms menu listing for this room. You can also enable or disable the menu for this room by clicking the Enable Menu checkbox.

Select the **MultiRoom** tab. The following screen appears:



Figure 17-4 Static Menus MultiRoom tab

From this screen, you can select the static menu for the room and place available groups into Items that will be displayed in the MultiRoom menu of this room. By selecting **Add All**, you can add all of the available groups to the Items that will be displayed in the MultiRoom menu of this room. You can also copy the menu to other rooms by selecting **Copy Menu to Other Rooms**. You can create a new group by selecting **Create a New Group**.