

Playmates

Playmates is a feature that allows you to combine multiple SpeakerLinX to function as one. For instance, if you have an outside deck and want to run six speakers that will function as a single zone, you'll need three SpeakerLinX (one for each pair of speakers). Using the Playmates functionality, all three SpeakerLinX function as if they were one SpeakerLinX and appear on the GUI as a single room.

IMPORTANT! Once configured, the homeowner cannot change this arrangement. An installer can upload a new configuration that removes the setting.

To set multiple SpeakerLinX to act as Playmates, complete the following steps:

1. Add the total number of SpeakerLinX devices. For more information on adding devices, refer to Chapter 3, *Adding Devices to the Project*.
2. Assign a unique name to each SpeakerLinX (for example, Deck 1 and Deck 2). See Figure 16-1.

IMPORTANT! When naming the SpeakerLinX, be sure to use unique names for all SpeakerLinX. Using the same name for two SpeakerLinX causes errors. Dealer Setup will change the names, but the names must be unique when added.

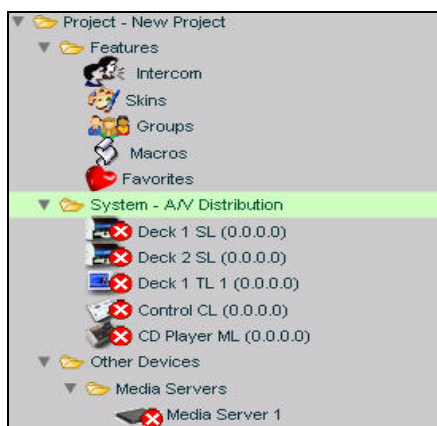


Figure 16-1 Adding SpeakerLinX

3. Identify the SpeakerLinX name you want to appear in the GUI (for example, Deck).
4. Click on the other SpeakerLinX (for example, Deck 2).
Information for that SpeakerLinX appears in the right window pane (see Figure 16-2).

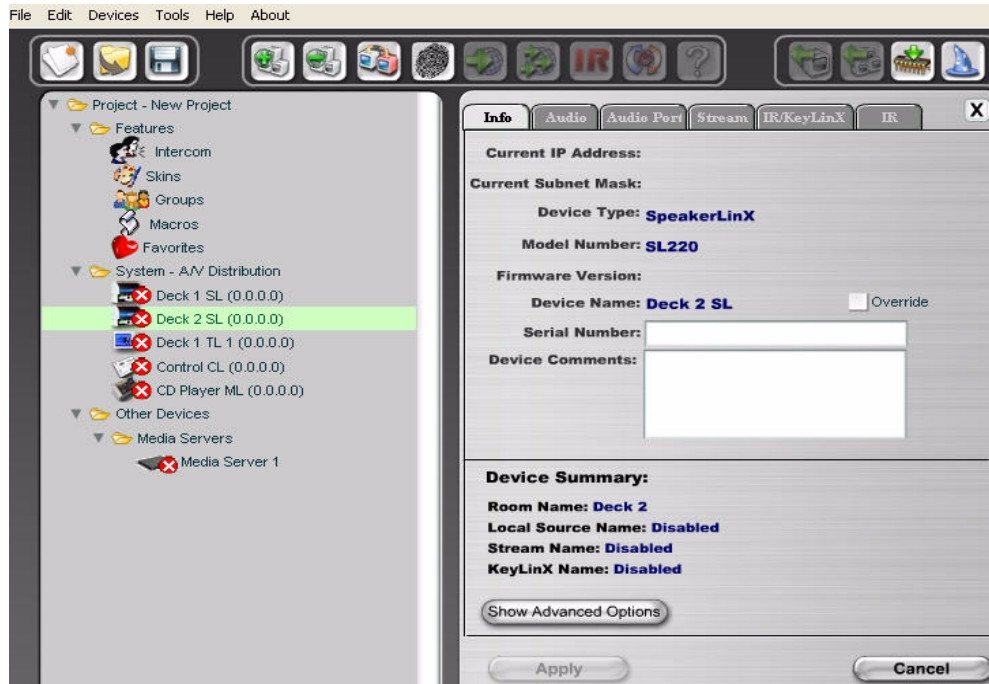


Figure 16-2 SpeakerLinX information

5. Select the **Audio** tab.
Audio information displays (see Figure 16-3).

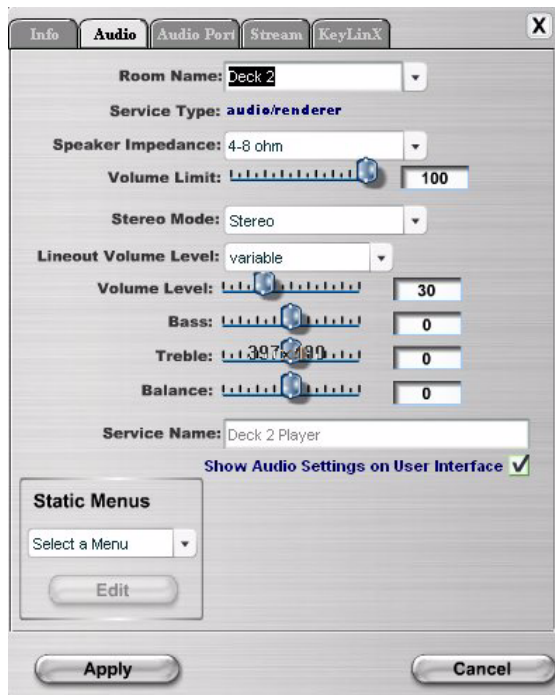


Figure 16-3 Audio information

6. Select the dropdown list next to **Room Name**.
7. Select the room name you want to include this SpeakerLinX into (for example, Deck).
8. Select **Apply**.
9. If an Audio Port is used, complete the following steps; otherwise, continue to step 10.
 - Select the **Audio Port** tab
 - Select **Streaming** from the dropdown list next to Service Type
 - Select **Apply**.
10. Repeat steps 3. through 9. for all SpeakerLinX in the room.

After the configuration is sent, the GUI will show a single room. All the linked SpeakerLinX now function as one.

Important Notes

IMPORTANT! In a room that uses Playmates, use the same model of SpeakerLinX and the same model of speaker throughout the room. This helps maintain uniform volume and performance.

IMPORTANT! If different models of SpeakerLinX are used, the equalizer setting of the SL250 won't be available for that room. The SL220 does not have the same equalizer capabilities as the SL250.

IMPORTANT! In a room that uses Playmates, a local source must be set to streaming for all SpeakerLinX in that room to use that source.
