

Introduction

The *NetStreams*[®] DigiLinX[™] IP-Based Multi-Room Audio and Video Distribution and Control system streams audio, video, control, and metadata over TCP/IP on an Ethernet network.

DigiLinX is a decentralized system. This means that different computer processes are distributed between the various devices in the network. This manual covers configuration of these devices.

DigiLinX Dealer Setup

The *NetStreams DigiLinX Dealer Setup* is a PC-based interface that can be used to configure all DigiLinX products and legacy devices. For DigiLinX installation instructions, see the *DigiLinX Installation and Design Guide*.

IMPORTANT! The DigiLinX Dealer Setup Program only works over a wired connection to the switch. DO NOT use a wireless connection to run the program.

IMPORTANT! The DigiLinX Dealer Setup Program will not work properly if it is not connected directly to a *NetStreams SwitchLinX[™]* or Qualified 3rd Party Switch.

IMPORTANT! Properly label all cables on the front end to facilitate installation.

Manuals

All *NetStreams* manuals can be downloaded by authorized *NetStreams* dealers from the Dealer section of the *NetStreams* website at www.netstreams.com.

Prerequisites

Before you begin installing and configuring the DigiLinX IP-Based Multi-Room Audio and Video Distribution and Control system, please note the following prerequisites.

Installer Requirements

This manual assumes the installer:

- has completed DigiLinX Dealer Certification Training and other training such as Custom Electronic Design and Installation Association's (CEDIA's) boot camp
- knows how to install audio keypads and connect audio components
- knows how to install and connect video components
- knows how to use basic installation tools such as an RJ45 crimper to terminate CAT5 cables
- has pulled all necessary wire to the locations where the preamp, keypads, and speakers are to be installed
- understands basic Microsoft® Windows® commands such as how to browse, create folders, save files, etc.

For more information on meeting the prerequisites, contact *NetStreams* Technical Support at +1866-353-3496.

PC Requirements

The minimum PC requirements for the DigiLinX Dealer Setup Program are:

- Windows XP operating system with SP2 or Windows Vista
- 512 MB of RAM (XP) 1GB of RAM (Vista)
- 1.2GHz processor (1.6GHz processor recommended).

Prior to Installation

The following are important to know before installing the DigiLinX system:

- Cable Connections. Ensure all cables are connected and terminated properly as covered in the *DigiLinX Installation and Design Guide*
- Firewall. Temporarily disable all firewalls that may be running on your PC
- IP Addressing for third-party hardware. Set the IP address for IP cameras and speakers prior to configuring them in DigiLinX. Consult the product user's guide for information on setting the IP address
- Diagnostics Tool. Run diagnostics to test your connection. This is covered in *Diagnostics* in Chapter 17.
- Restart. Restarting your PC enables some network setting changes. To restart, close the DigiLinX Dealer Setup program and reboot your computer.

NOTE: If you have difficulty establishing a network connection after completing these steps, call *NetStreams* tech support at +1866-353-3496.

Additional Hardware

There are several third-party devices that can work with the DigiLinX system. Each should be installed and set up using the manufacturer's software before configuration with the DigiLinX Dealer Setup program. These additional products include:

- Panasonic® IP Cameras
- IP Speakers
- Media Servers
- Lutron® RadioRA®
- Lutron® HomeWorks®
- Aprilaire® HVAC system
- GE® Concord™
- Vantage™ Lighting system
- Sonance® iPort™
- Devices connected to the system through use of *NetStreams'* General Purpose Driver.

NOTE: RS-232 connections for General Purpose devices are one-way. Two-way drivers are programmed by the installer (refer to *Writing NetStreams Device Drivers* available on the Dealer Documents page of the *NetStreams* web site).

NOTE: If any devices use an IP address, note the address for use later in these procedures.

How It Works

There are several basic steps to installing a DigiLinX system:

- create the project
- match the physical hardware devices to the hardware setup in the project
- configure devices with system-specific information
- save the project
- send the configuration files to the project
- learn IR commands.

Interface

You can set up devices using DigiLinX Dealer Setup either manually or with the Wizard.

NOTE: This manual uses the Wizard as the basis for installation. See Figure 1-1 for the DigiLinX Dealer Setup interface.

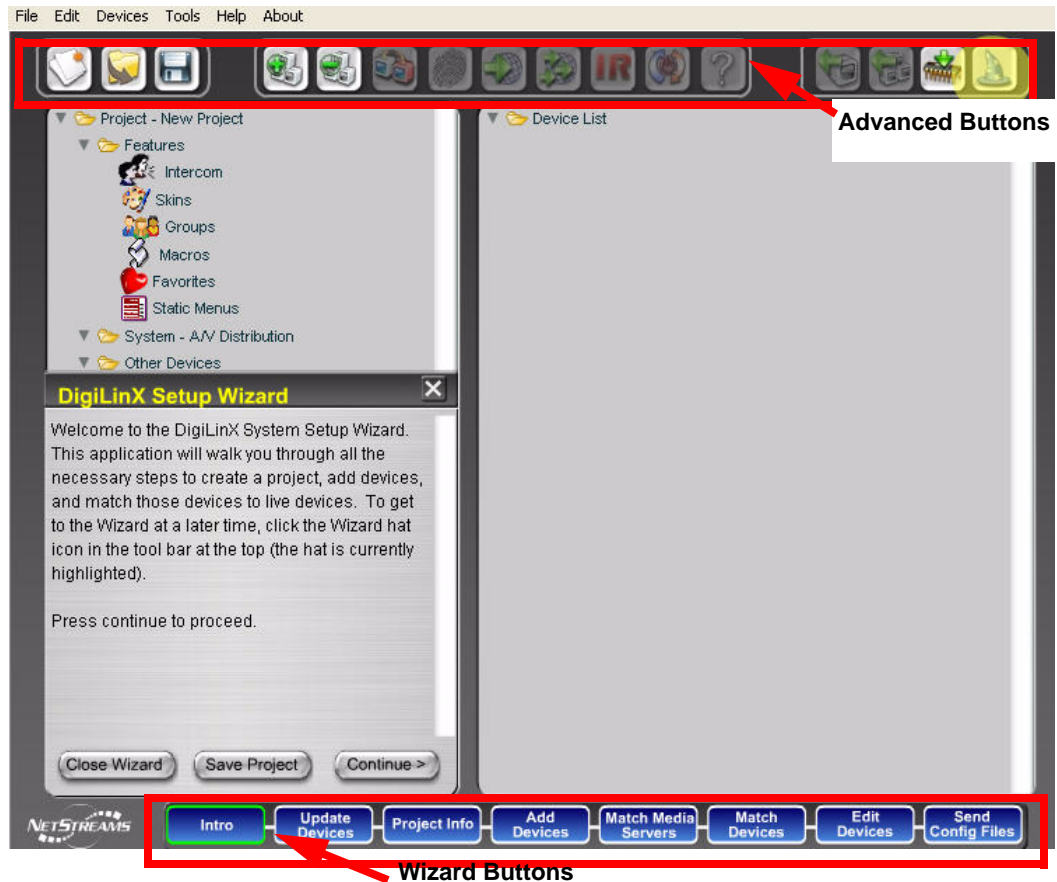


Figure 1-1 DigiLinX Dealer Setup Interface

Buttons

There are two rows of buttons available from the DigiLinX Dealer Setup interface. The ones at the top are available for use when you are not using the DigiLinX Dealer Setup Wizard to configure your system. The bottom row buttons are only visible when you are using the Wizard.

Table 1-1 defines the use of each button.

Table 1-1
Buttons
























Button	Means	Function
	New Project	Creates a new project.
	Open Project	Opens a previously-saved project.
	Save Project	Saves the current project to a file.
	Add Device	Lets you add another device to the current project.
	Remove Device	Lets you remove a device from the current project.
	Match Device	Lets you match the physical device by MAC (machine addressable code).
	ID Devices	Lets you identify and match physical devices with the project.
	Send Configuration to Device	Sends information from the project file to the device.
	Send Configuration to Multiple Devices	Sends information from the device to multiple devices.
	IR Tools	Configures IR to work with the DigiLinX system.
	Restart Device	Lets you restart the selected device.
	About Device	Displays important information about the device.
	Import Device	Troubleshooting tool that allows you to take a device that physically exists on the network and import its configuration.
	Import System	Troubleshooting tool that allows you to take all devices that physically exist on the network and import their configuration.

Table 1-1
Buttons

Button	Means	Function
	Update Devices	Shows you a current listing of all devices connected to the system and their current firmware version.
	Setup Wizard	Returns you to the DigiLinX Dealer Setup Wizard.
NOTE: The following buttons are only available when the DigiLinX Dealer Setup Wizard is running.		
	Intro	Introduction to the DigiLinX system.
	Update Devices	Shows you a current listing of all devices connected to the system and their current firmware version.
	Project Info	Lets you enter unique network-specific information for this project.
	Add Devices	Lets you add another device to the current project.
	Match Media Servers	Lets you match a media server created in the project to the physical device. This is done to ensure that the IP address of the media server matches the IP address configured in the project.
	Match Devices	Lets you associate a device (such as <i>MediaLinX</i> , <i>SpeakerLinX</i> , and so on) in a project with the physical device. This is how Dealer Setup knows which configuration to send to which device.
	Edit Devices	Lets you edit the configuration information in various ways depending on the device selected.
	Send Config Files	Takes all the information you've defined up to this point and uploads it to the system.

Areas of the Interface Screen

There are four areas of the interface screen. These include:

- Menu Bar. The menu bar allows you to select operations from the File, Edit, Devices, Tools, Help, or About menus (see Figure 1-2)

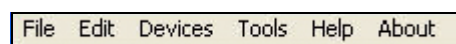


Figure 1-2 Menu Bar

- Project area - displays project hardware as you create it (see Figure 1-3)

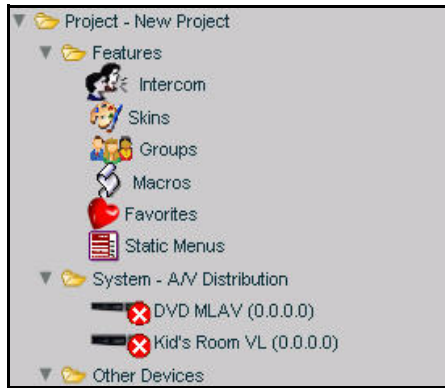


Figure 1-3 Project area

- Wizard area - displays information about the current process being performed using the Wizard (see Figure 1-4). Contains buttons to close the Wizard, save your project, or continue to the next Wizard operation

NOTE: If you hold the left mouse button down over the title bar of this window, you can move the Wizard area to anywhere on your DigiLinX screen.



Figure 1-4 Wizard area

- Device List - lists the physical devices attached to your system (see Figure 1-5).

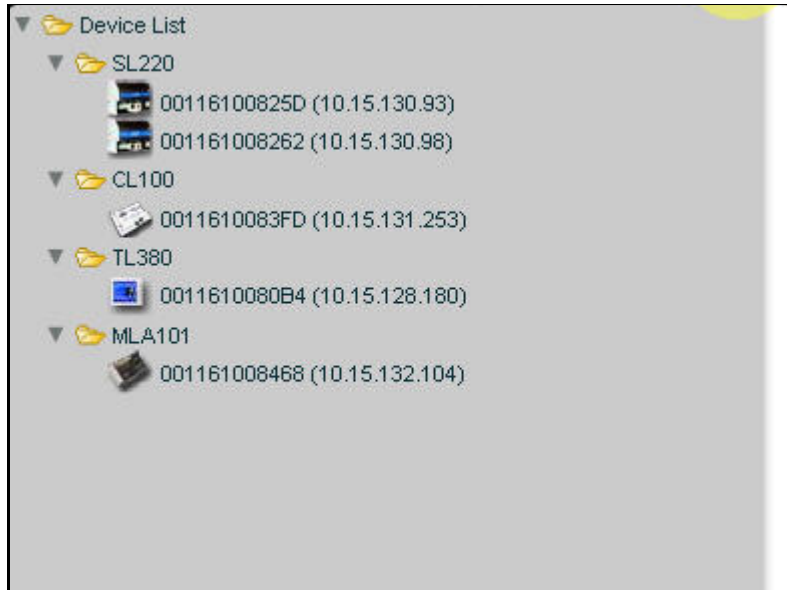


Figure 1-5 Device list