



DigiLinX™ Application Note

Integrating DSC Security with DigiLinX

Dealer Setup 2.4 adds a driver for integrating certain DSC security products with the DigiLinX system. The integration is built around the DSC PowerSeries integration module, IT-100. To determine what products can be integrated using this module please refer to the DSC documentation for the IT-100.

At the time of writing this document, the IT-100 spec sheet indicated that the following DSC products were compatible with the IT-100.

- PC1616 6-16 zone control panel
- PC1832 8-32 zone control panel
- PC1864 8-64 zone control panel
- Power432™ (PC580) 4-32 zone control panel
- Power632™ (PC1555MX) 6-32 zone control panel
- Power832® (PC5010/5015) 8-32 zone control panel
- Power864™ (PC5020) 8-64 zone control panel

Required Equipment

- DSC IT-100
- NetStreams ControLinX (CL100) or MediaLinX Pro (MLA4000)
- RS-232 cable (not null modem)

Integration Approach

With DSC, the DigiLinX system acts as a virtual keypad for the DSC system. This means that the DSC system controls the messages and zone information that is displayed on the TouchLinX. This simplifies the integration as no zone labels; messages etc need to be defined in the DigiLinX system. If you have questions on the messages displayed on the DigiLinX GUI when integrated to DSC please refer to DSCs documentation on its messages. This also allows the DigiLinX system to support as many zones as the DSC system will support with the IT-100 integration adapter.

Steps to integrate the two systems

First you will need to physically connect the two devices using a standard RS-232 cable (not a null modem cable), a gender changer maybe required. Once the devices are physically connected the system must be configured using Dealer Setup.

Open dealer setup and add either a ControLinX or MLA4000 to the project depending on which device you are using to interface with the IT-100. Figure 1 shows the addition of a ControLinX and the selection of DSC Security as the driver.

Once the ControLinX has been added to the project you need to name your security zones and finally set which rooms will have access to the security functionality. Please note that if you set security functionality as available to a room without a TL380, TL430, or TL700 in it, then the security functionality will only be available in the Virtual Control Software for that room.

e.g. a room with a TLA250 will not show a security user interface on the TLA250, but the security interface will be available in the web GUI for that room.



DigiLinX™ Application Note

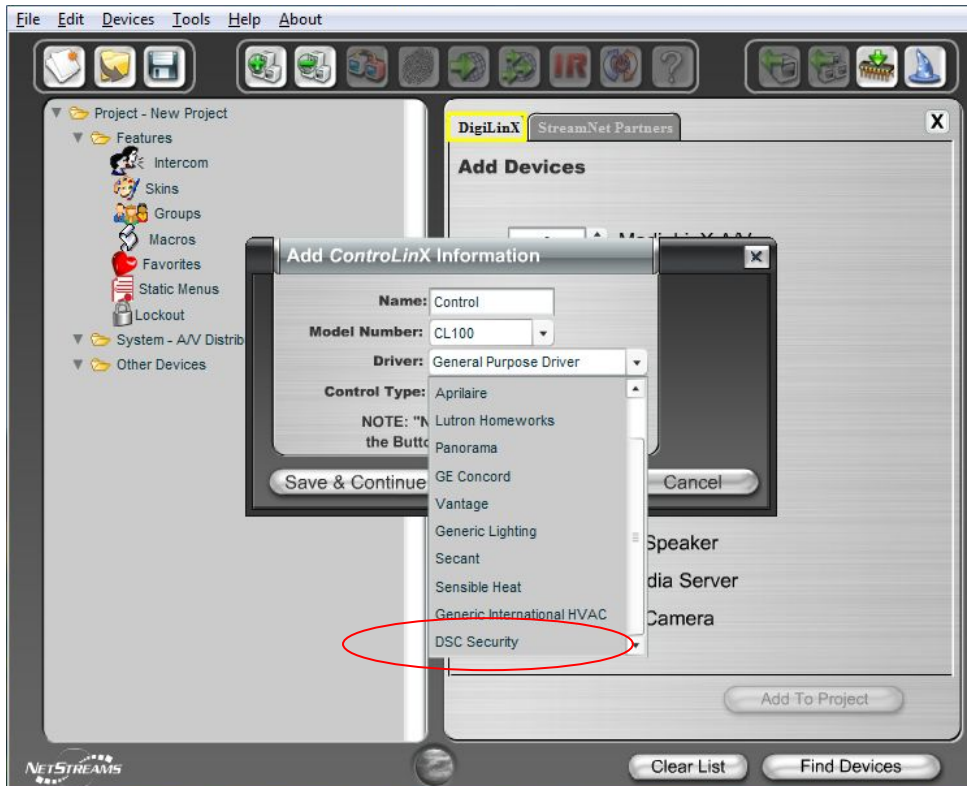


Figure 1: Selecting DSC as the driver for your ControlLinX



DigiLinX™ Application Note

Labels Tab

The labels tab is NOT USED with the DSC driver, it applies to other security products. DO NOT ENTER ANYTHING ON THIS TAB.



Figure 2: Labels Tab



DigiLinX™ Application Note



Figure 3: Managing which rooms have access to security functionality

For further information or help please go to www.netstreamsforums.com or contact *NetStreams* support at support@netstreams.com. Support is available M-F 8am-7pm.