

DIGILINX™ Application Note

DigiLinX Virtual Control Software

The *DigiLinX* Virtual Control Software is a Microsoft® Windows® application that allows your PC to function like a *TouchLinX*™. This is ideal in cases where:

- the installer wants to provide the user with one or more Windows shortcuts that go directly to a specific room
- the installer does not want the user to open Internet Explorer and select a bookmark
- the installer wants to have the interface fill the entire screen without visible title bars.

You must have a *SpeakerLinX*™ connected to your system and you must know the IP address of the *SpeakerLinX* for the *DigiLinX* Virtual Control Software to work.

Installing *DigiLinX* Virtual Control Software

1. Go to the Dealer section of the www.netstreams.com website under *DigiLinX* tools.
2. Click on ***DigiLinX* Virtual Control Software** and save the program to your PC.
3. Verify that the PC is connected to the network and is on the proper IP address scheme (see Application Note 030022 - *Home PC Network Integration* in the Dealer section of the www.netstreams.com website under Dealer Documents.)
4. Double click on the ***DigiLinX* Virtual Control Software** icon.
5. On the Welcome screen, click on **Next** as shown in Figure 1.

The
IP-Based
Distributed
Entertainment
Company.

Products Included:

DigiLinX
TouchLinX
SpeakerLinX



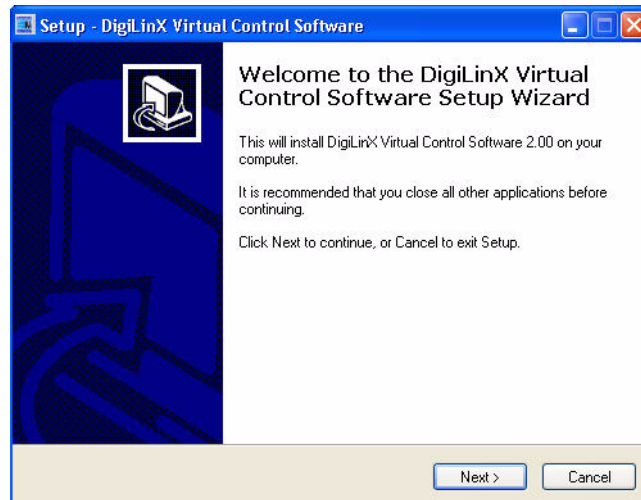


Figure 1 Welcome screen

6. On the License screen, click on **I accept the agreement** as shown in Figure 2.

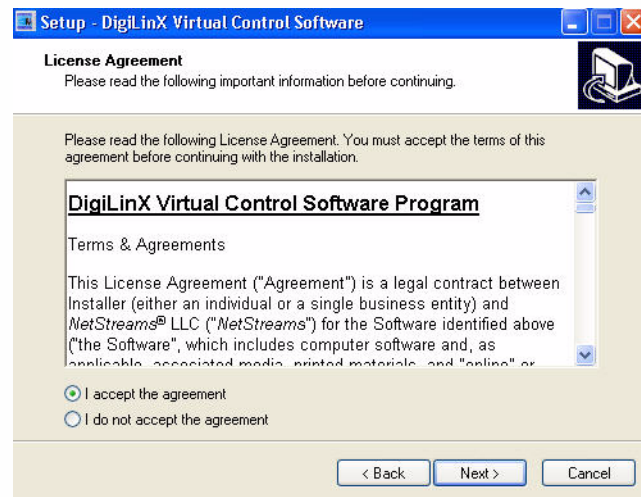


Figure 2 License screen

7. On the Select Destination Location screen, click on **Next** to continue or **Browse** to install the software in a different location.

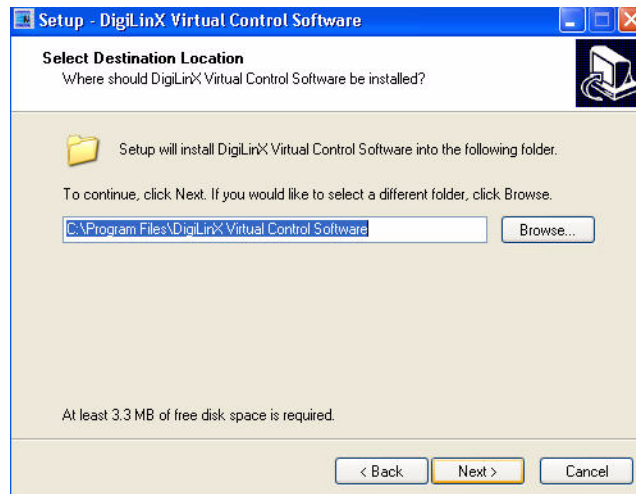


Figure 3 Select Destination Location screen

8. On the Select Start Menu Folder screen, click on **Next** to continue or select **Browse** to install the program shortcuts in a different folder as shown in Figure 4.

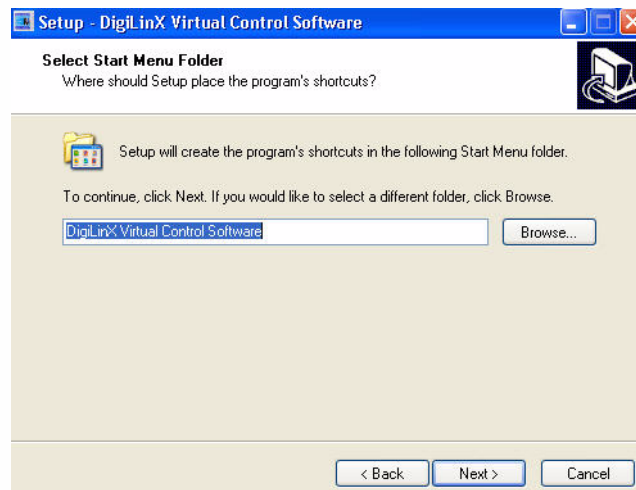


Figure 4 Select Start Menu Folder screen

9. On the Additional Tasks screen, select **Create a Quick Launch icon** to create a quick launch icon or press **Next** to continue as shown in Figure 5.

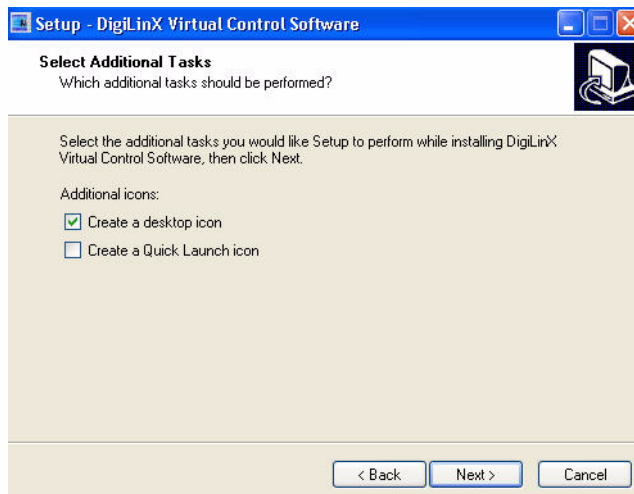


Figure 5 Additional Tasks screen

10. On the Ready to Install screen, select **Install** as shown in Figure 6.

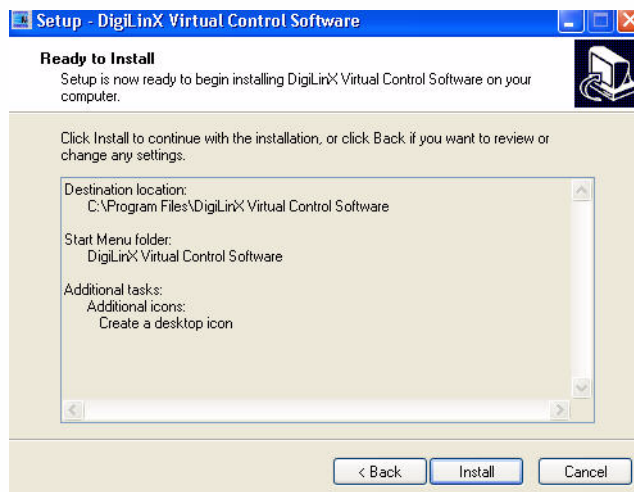


Figure 6 Ready to Install screen

11. On the Completing *DigiLinX* Virtual Control Software Setup Wizard screen, select **Finish** as shown in Figure 7.

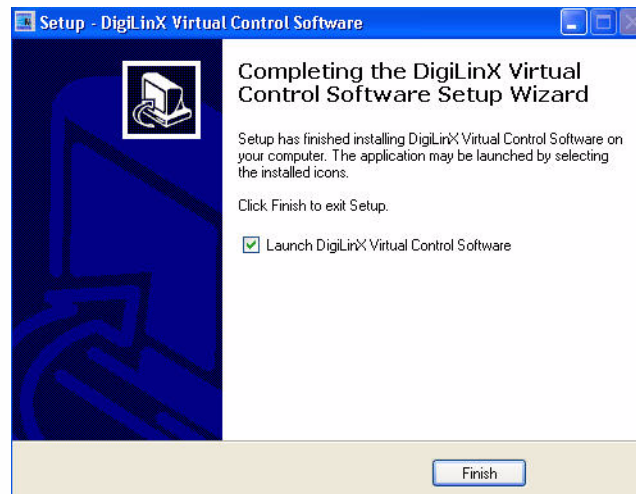


Figure 7 Completing *DigiLinX* Virtual Control Software Setup Wizard screen

Configuring *DigiLinX* Virtual Control Software

After installing *DigiLinX* Virtual Control Software, the application prompts the installer for configuration information that will allow the installer to specify which room is the default. To configure the software, complete these steps:

1. Click on the ***DigiLinX* Virtual Control Software** icon on your desktop. A settings screen appears asking for the IP address and the name of the room for the *SpeakerLinX* you are connected to.
2. Enter the IP address for the *SpeakerLinX* in your project as shown in Figure 8. This tells the *DigiLinX* Virtual Control Software which room to default to when the shortcut is executed. The Room Name field is optional. If this field is left blank, the *DigiLinX* Virtual Control Software will automatically open on the Location page of the GUI allowing the user to initially choose which room to control. Adding the room name will also enable any static menu configured for the room.



Figure 8 *DigiLinX* Virtual Control Software settings screen

3. Click **Submit**. The *DigiLinX* Virtual Control Software application screen appears as shown in Figure 9.



Figure 9 DigiLinX TouchLinX Virtual Control Software application screen

Using the *DigiLinX* Virtual Control Software

After configuring the software, it is ready to use. When the *DigiLinX* Virtual Control Software has been started by the homeowner, the home owner can adjust the configuration settings and can toggle the application in and out of Kiosk mode.

Kiosk Mode

Kiosk mode causes the application to fill the entire screen and removes title bars. This feature is ideal in cases where the computer is dedicated to controlling *DigiLinX*. (see Additional Command Line Options for making this mode the default.) To toggle between Windows mode and Kiosk mode, press the **F11** key.

Changing the Configuration

When *DigiLinX* Virtual Control Software is started, the Settings page is presented. After that, the page is not automatically displayed. To change the settings, complete the following steps:

1. Right click on the *DigiLinX* Virtual Control Software title bar.
2. Choose settings. The Settings page appears as shown in Figure 10 and changes can be made.
3. Click **Submit** to save the changes.



Figure 10 DigiLinX Virtual Control Software settings screen

Additional Command Line Options

The *DigiLinX* Virtual Control Software also allows the installer to specify command line options that enable additional features. By using command line options, multiple shortcuts can be created on the desktop each going to a different room, or the *DigiLinX* Virtual Control Software can be placed in Kiosk mode allowing the software to completely fill the screen. Command line options are as follows:

/IP=X.X.X.X: Connect to this address

/ROOMNAME="Room Name": Use this room for GUI settings. The quotes on the room name are required.

/KIOSK: Start full screen (F11 toggles Kiosk mode)

/SESSION:<unique name> Stores settings, including window size and position in a unique location. This is useful for creating multiple icons. The unique name will appear on the title bar.

To use command line options, complete the following steps:

1. Right click on the *DigiLinX* Virtual Control Software icon and choose **Properties**. Click on the **Shortcut** tab. The following screen appears.

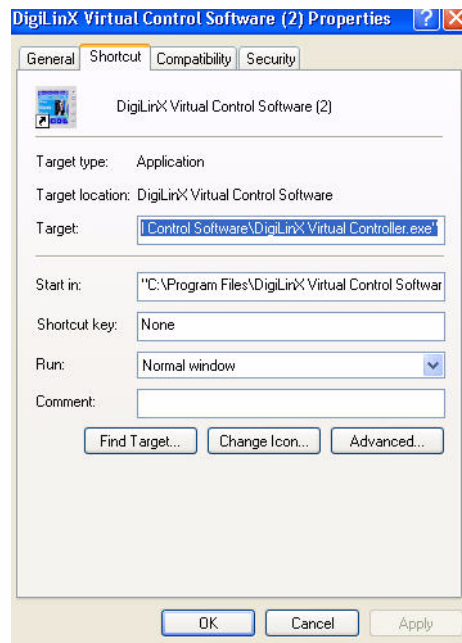


Figure 11 Shortcut tab

- The path for the *DigiLinX* Virtual Control Software executable is in the Target field. Add the desired command line options to the end of the path. Refer to the following examples.

Examples

To make the *DigiLinX* Virtual Control Software automatically go the Living Room and use the *SpeakerLinX* at 10.15.1.187, the Target field would look like this:

```
"C:\Program Files\DigiLinX Virtual Control Software\DigiLinX Virtual Controller.exe" /ROOMNAME="Living Room" /ip=10.15.1.187
```

To make the *DigiLinX* Virtual Control Software automatically go to the Living Room and use the *SpeakerLinX* at 10.15.1.187, and appear in Kiosk mode, the Target field would look like this:

```
"C:\Program Files\DigiLinX Virtual Control Software\DigiLinX Virtual Controller.exe"/ROOMNAME="Living Room" /ip=10.15.1.187/KIOSK
```