

# DIGILINX™ Application Note

## Configuring Lutron® HomeWorks® Products with *DigiLinX*

The  
IP-Based  
Distributed  
Entertainment  
Company.

### Products Included:

*DigiLinX*

### Introduction

This application note explains how to integrate the *DigiLinX* IP-Based Multi-Room Audio and Control system with the Lutron® HomeWorks® system.

### Before You Start

The following items are required to be on hand before you begin configuring the Lutron HomeWorks product with *DigiLinX*.

- Lutron system installed and configured
- A *DigiLinX* system with a *ControLinX*™ dedicated to Lutron HomeWorks
- *TouchLinX*™ (or other browser-based user interface)
- 3.5mm to RS-232 communications cable (included with *ControLinX*)
- *DigiLinX* Dealer Setup software version 1.6 or higher (installed).

### Connecting *ControLinX* to the HomeWorks Processor

1. Connect the 3.5mm phono connector of the RS-232 communications cable to the *ControLinX*.
2. Connect the other end of the cable (DB-9) to the RS-232 port (port 3 or 7) on the HomeWorks processor.

### Entering Device Information in the *DigiLinX* Dealer Setup Program

Using the *DigiLinX* Dealer Setup program, you can enter information about the *ControLinX* device you are configuring.

1. With the *ControLinX* connected to the HomeWorks processor, start the Dealer Setup program.
2. Navigate to the project you want to modify settings for.



- Click on the icon for the *ControlLinX* you want to configure in the project.  
The Info tab for the *ControlLinX* hosting a HomeWorks system displays in the right window pane (see Figure 1).

**Figure 1** *ControlLinX* with HomeWorks Info tab

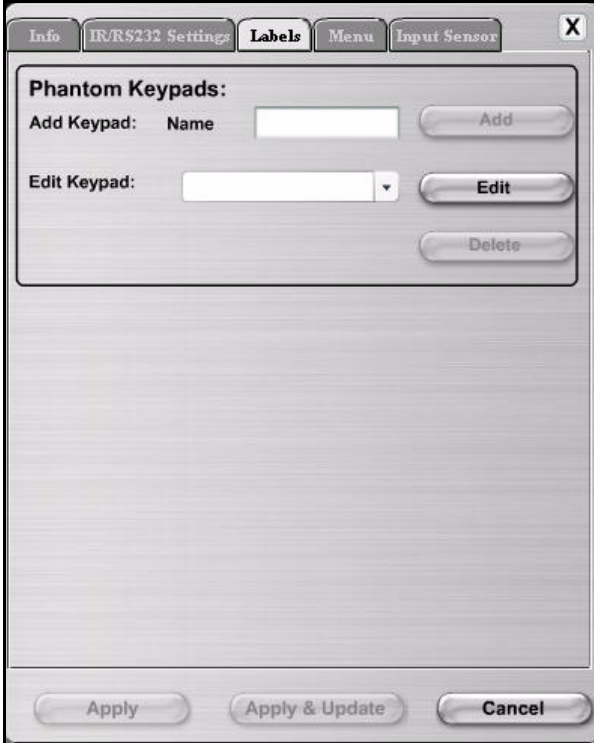
The Info tab contains all of the information that was auto-discovered for the designated *ControlLinX*.

- In the **Device Comments** field, enter identifying information about the *ControlLinX* device.
- Click **Apply**.

## Assigning Phantom Buttons in Dealer Setup

Phantom buttons must already be programmed into the HomeWorks system for the button assignments to work correctly with the *DigiLinX* system.

1. From the selected *ControlLinX*, click on the **Labels** tab.  
The Labels tab for the *ControlLinX* hosting a HomeWorks displays in the right window pane (see Figure 2).

The screenshot shows a software window titled "IR/R5232 Settings" with several tabs: "Info", "IR/R5232 Settings", "Labels", "Menu", and "Input Sensor". The "Labels" tab is active. Inside the window, there is a section titled "Phantom Keypads:". Below this title, there are three rows of controls. The first row is labeled "Add Keypad:" and has a "Name" field with a text input box and an "Add" button. The second row is labeled "Edit Keypad:" and has a dropdown menu and an "Edit" button. The third row has a "Delete" button. At the bottom of the window, there are three buttons: "Apply", "Apply & Update", and "Cancel".

**Figure 2** Entering a Name for the Phantom Keypad

2. Enter a name for the phantom keypad in the **Name** field.
3. Click **Add**.  
The keypad information displays in the lower pane of the window. The phantom buttons are listed on the left under the keypad information (see Figure 3).

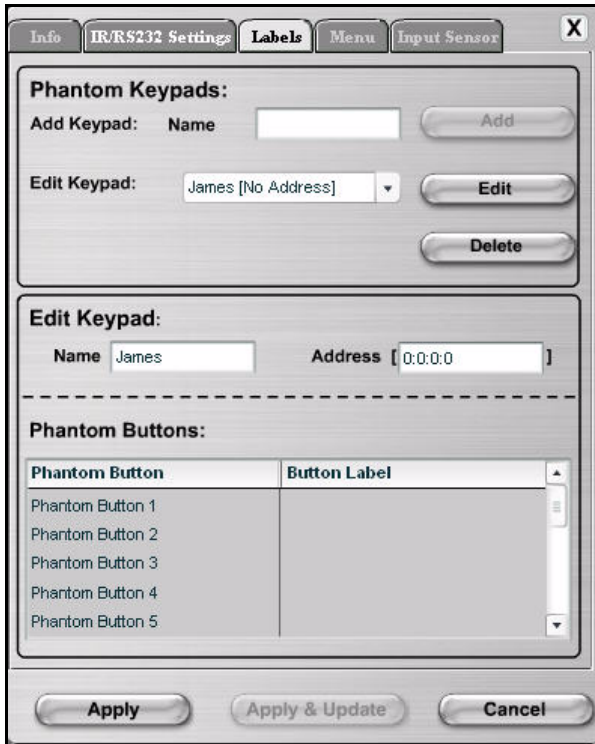


Figure 3 Phantom Buttons

4. Enter the HomeWorks keypad address in the **Address** field as three hexadecimal values (in the form XX:XX:XX). The colons (:) you enter in the Address field will change to periods. The keypad address is a hex code and should not be confused with an IP address.

---

**NOTE:** If you are using an HRP5-120 (wireless processor), you will enter four hexadecimal values with the fourth value being the processor identification number.

---

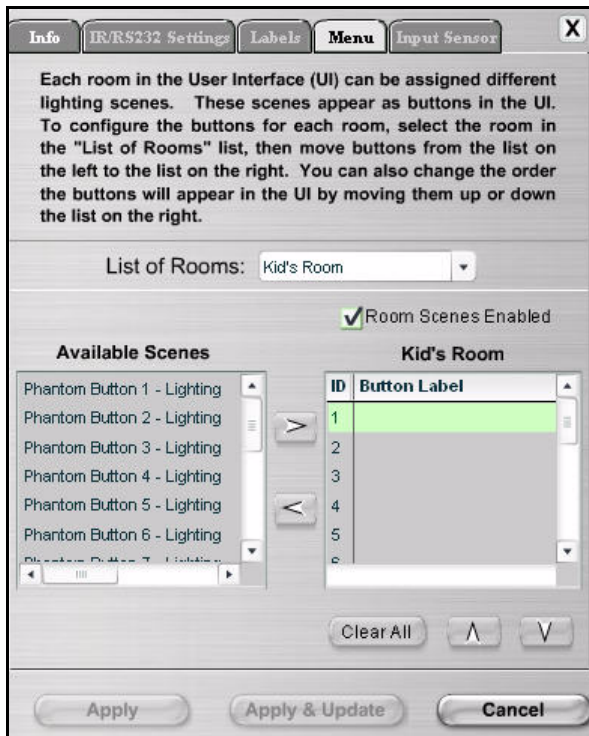
5. In the fields under **Button Label**, enter descriptive names for each of the Phantom buttons for this keypad. These descriptive names will appear on the *TouchLinX* user interface (or other browser-based user interface) used to control the *DigiLinX* system.

---

**NOTE:** There is limited space on the touch screen, so keep the button name as short as possible.

---

6. When you are finished entering button labels, click **Apply**.
7. Select the **Menu** tab.  
The Menu tab for the *ControLinX* hosting a HomeWorks system displays in the right window pane (see Figure 3). The Menu tab allows you to determine what order the scenes (phantom buttons) are presented on the lighting menu in the user interface for each room.



**Figure 4** Menu tab for the *ControlinX* hosting a HomeWorks system

8. Each room in the user interface can be assigned different lighting scenes. These scenes appear as buttons in the user interface. To configure buttons, select a room under the **List of Rooms** drop-down menu.
9. Select a scene from the **Available Scenes** list.
10. Use the right arrow button to move the scenes into the room. You can add up to 17 scenes for each room. If you need to remove a scene, use the left arrow button.
11. To adjust the order in which the buttons are presented on the user interface, select a button and use the up and down arrow buttons.
12. Click **Apply**.
13. Remember to click the **Send Configuration Files** button to send the configuration to the *ControlinX* and other *DigiLinX* devices.

## Disabling Flow Control and Handshaking

Use the HomeWorks software to disable flow control and handshaking on the HomeWorks processor.

## Validating the Installation

After all configurations are updated, use a *TouchLinX* or web browser to validate the installation.

1. Click the **Lighting** button on the *DigiLinX* user interface.

2. Click one of the scene buttons you set up in an earlier step.
3. Ensure that the lighting scene you selected is activated by the button you pressed.